

LA PORTE, TEXAS

AL-5433 (FAA)

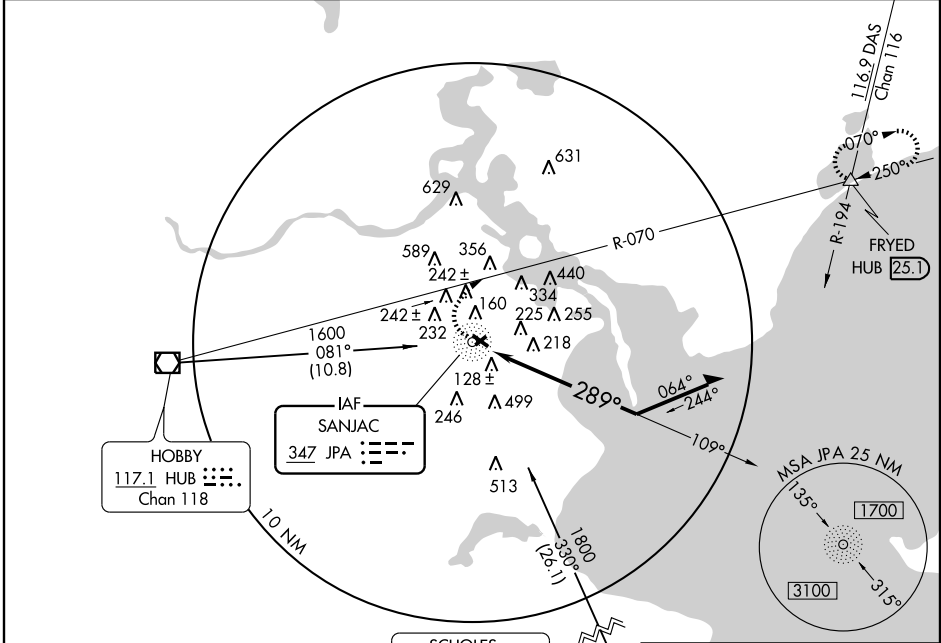
NDB JPA 347	APP CRS 289°	Rwy Idg TDZE Apt Elev	3763 24 25
-----------------------	------------------------	-----------------------------	---------------------------------------

NDB RWY 30

LA PORTE MUNI (T41)

▼ Use Ellington Field altimeter setting.
 ▲ NA MISSED APPROACH: Climbing right turn to 1600 via HUB R-070 to FRYED Int and hold.

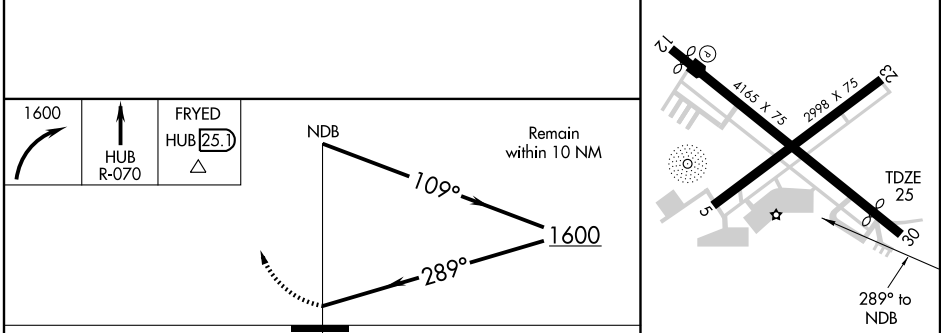
HOUSTON APP CON 134.45 284.0	CLNC DEL 125.6	UNICOM 122.7 (CTAF)
--	--------------------------	-------------------------------



SC-5, 22 OCT 2009 to 19 NOV 2009

SC-5, 22 OCT 2009 to 19 NOV 2009

1200 ▲	SCHOLES 113.0 VUH Chan 77	ELEV 25
--------	---------------------------------	---------



CATEGORY	A	B	C	D
S-30	740-1	715 (800-1)	740-2 715 (800-2)	NA
CIRCLING	740-1	715 (800-1)	740-2 715 (800-2)	NA

REIL Rwy 12
MIRL Rwy 5-23 and 12-30

LA PORTE, TEXAS
Amdt 2A 09071

29°40'N-95°04'W

LA PORTE MUNI (T41)

NDB RWY 30