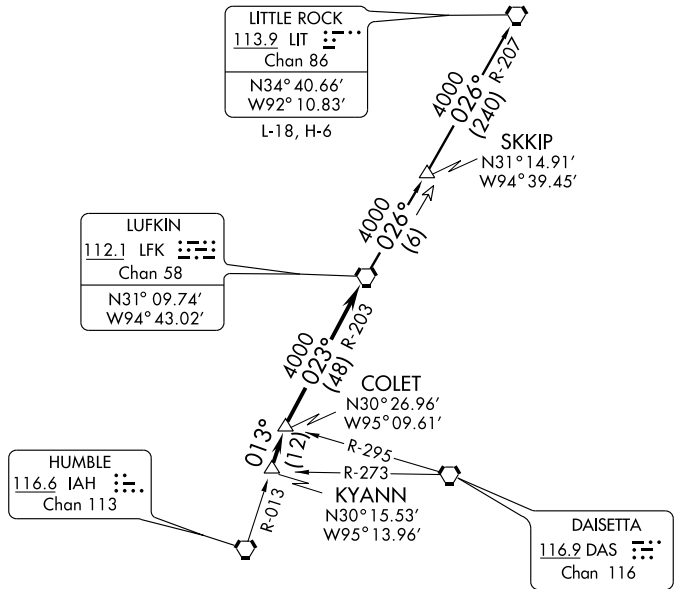


CLNC DEL
125.6
HOUSTON DEP CON
134.45 284.0
CTAF
122.7



TAKE-OFF MINIMUMS:

All rwys, standard.

NOTE: Chart not to scale.

NOTE: Radar Required.

NOTE: For aircraft destined LIT, or overflying LIT or PXV.

TAKE-OFF OBSTACLES:

Rwy 5, Stack 2.1 NM from DER, 3297' left of centerline, 330' AGL/334' MSL.

Rwy 12, Pole 131' from DER, 261' right of centerline, 14' AGL/38' MSL. Stack 2.2 NM from DER, 1.6 NM right of centerline, 479' AGL/499' MSL.



DEPARTURE ROUTE DESCRIPTION

When entering controlled airspace, fly assigned heading for vectors to KYANN INT, maintain 4000', expect filed altitude 10 minutes after departure. Thence . . .

. . . via IAH R-013 to COLET INT, then right turn via LFK R-203 to LFK VORTAC.

LITTLE ROCK TRANSITION (LFK5.LIT): From over LFK VORTAC via LFK R-026 to SKKIP INT, then via LIT R-207 to LIT VORTAC.