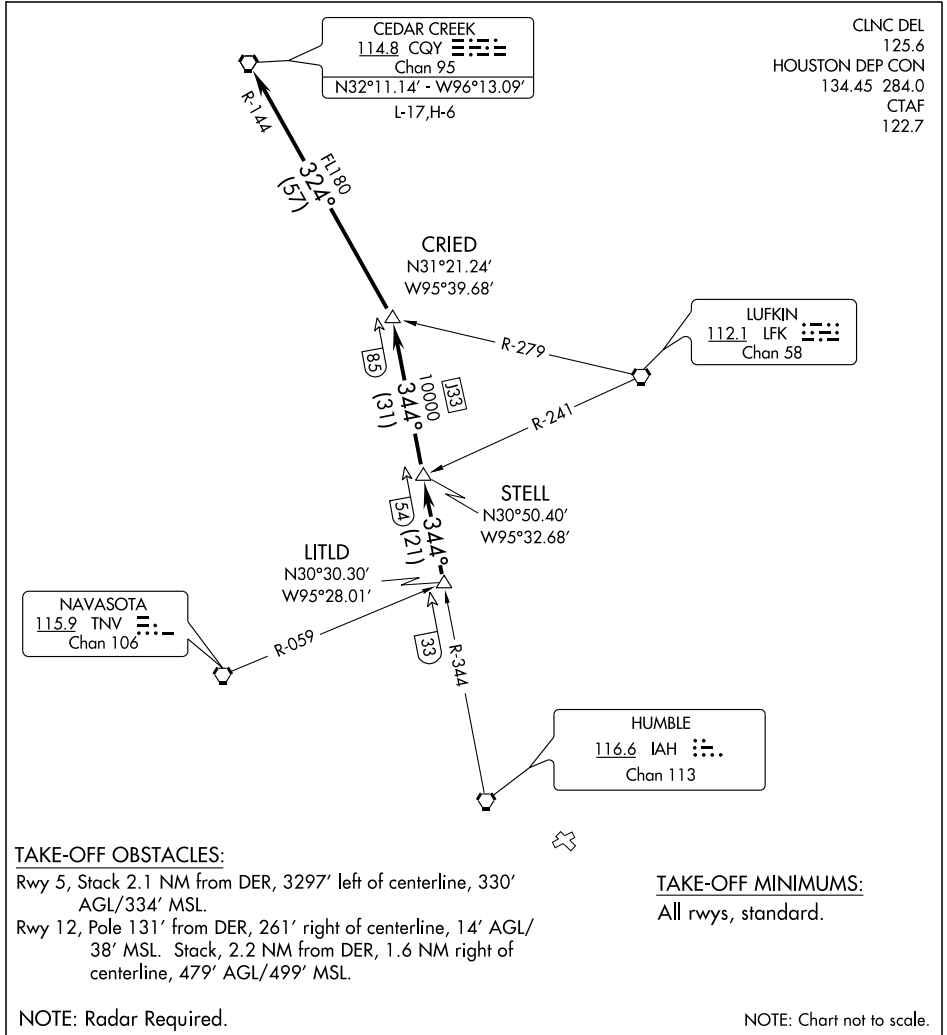


CRIED THREE DEPARTURE

SL-5433 (FAA)

LA PORTE MUNI (T41)
LA PORTE, TEXAS



SC-5, 22 OCT 2009 to 19 NOV 2009

SC-5, 22 OCT 2009 to 19 NOV 2009

TAKE-OFF OBSTACLES:

Rwy 5, Stack 2.1 NM from DER, 3297' left of centerline, 330' AGL/334' MSL.
 Rwy 12, Pole 131' from DER, 261' right of centerline, 14' AGL/38' MSL. Stack, 2.2 NM from DER, 1.6 NM right of centerline, 479' AGL/499' MSL.

TAKE-OFF MINIMUMS:

All runways, standard.

NOTE: Radar Required.

NOTE: Chart not to scale.



DEPARTURE ROUTE DESCRIPTION

When entering controlled airspace, fly assigned heading for vectors to LITLD INT, maintain 4000. Expect filed altitude 10 minutes after departure. Thence

. . . . via IAH R-344 to STELL INT, then via IAH R-344 to CRIED INT, then left turn via CQY R-144 to CQY VORTAC.

CRIED THREE DEPARTURE