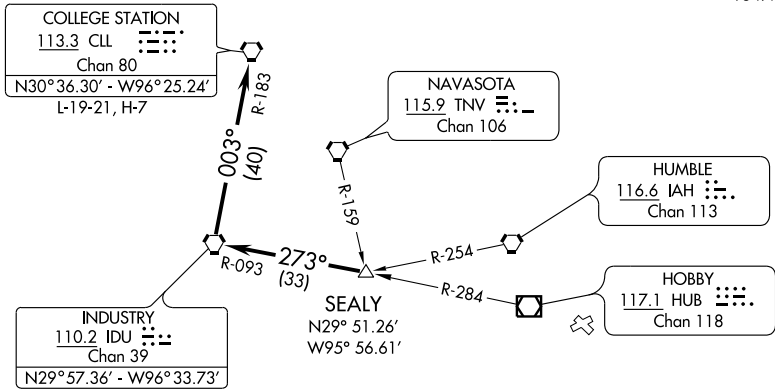


CLNC DEL 125.6
HOUSTON DEP CON 134.45 284.0
CTAF 122.7



TAKE-OFF OBSTACLES:

Rwy 5, Stack 2.1 NM from DER, 3297' left of centerline, 330' AGL/334' MSL.
Rwy 12, Pole 131' from DER, 261' right of centerline, 14' AGL/38' MSL. Stack 2.2 NM from DER, 1.6 NM right of centerline, 479' AGL/499' MSL.

TAKE-OFF MINIMUMS:

Rwys 5,12, 23, 30 standard.

NOTE: Radar Required.

NOTE: Chart not to scale.



DEPARTURE ROUTE DESCRIPTION

When entering controlled airspace, fly assigned heading for vectors to SEALY INT, maintain 4000, expect filed altitude 10 minutes after departure. Thence

. . . . via IDU R-093 to IDU VORTAC, then right turn via IDU R-003 and CLL R-183 to CLL VORTAC.