

GRIFFITH, INDIANA

AL-5431 (FAA)

VORTAC CGT 114.2 Chan 89	APP CRS 084°	Rwy Idg TDZE 634 Apt Elev 634
--	------------------------	---

VOR RWY 8

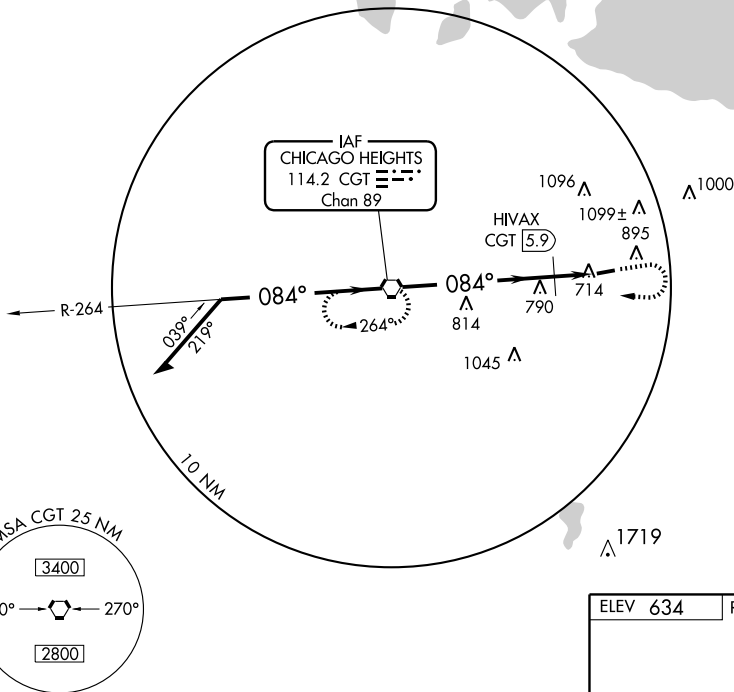
GRIFFITH-MERRILLVILLE (05C)

Obtain local altimeter setting on CTAF; when not received, use Chicago Midway Intl altimeter setting and increase all MDAs 60 feet. Visibility reduction by helicopters NA.

MISSED APPROACH: Climb to 1100 then climbing right turn to 2300 direct CGT VORTAC and hold.

CHICAGO APP CON
133.1 285.6

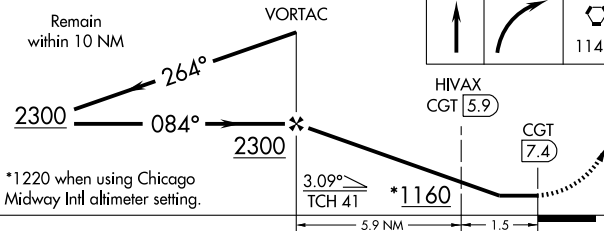
UNICOM
123.0 (CTAF) 0



EC-2, 22 OCT 2009 to 19 NOV 2009

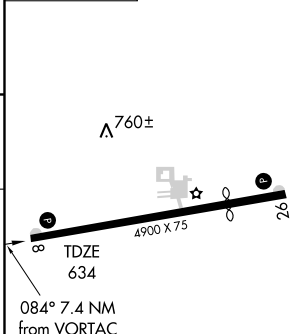
EC-2, 22 OCT 2009 to 19 NOV 2009

VGSI and descent angles not coincident.



*1220 when using Chicago Midway Intl altimeter setting.

ELEV 634 Rwy 26 Idg 3780'



CATEGORY	A	B	C	D
S-8	1160-1	526 (600-1)		NA
CIRCLING	1200-1	566 (600-1)		NA
HIVAX FIX MINIMUMS				
S-8	1000-1	366 (400-1)		NA
CIRCLING	1200-1	566 (600-1)		NA

REIL Rwy 8 and 26	0
MIRL Rwy 8-26	0
FAF to MAP 7.4 NM	
Knots	60 90 120 150 180
Min:Sec	7:24 4:56 3:42 2:58 2:28

GRIFFITH, INDIANA
Amdt 8 07074

41°31'N - 87°24'W

GRIFFITH-MERRILLVILLE (05C) VOR RWY 8