

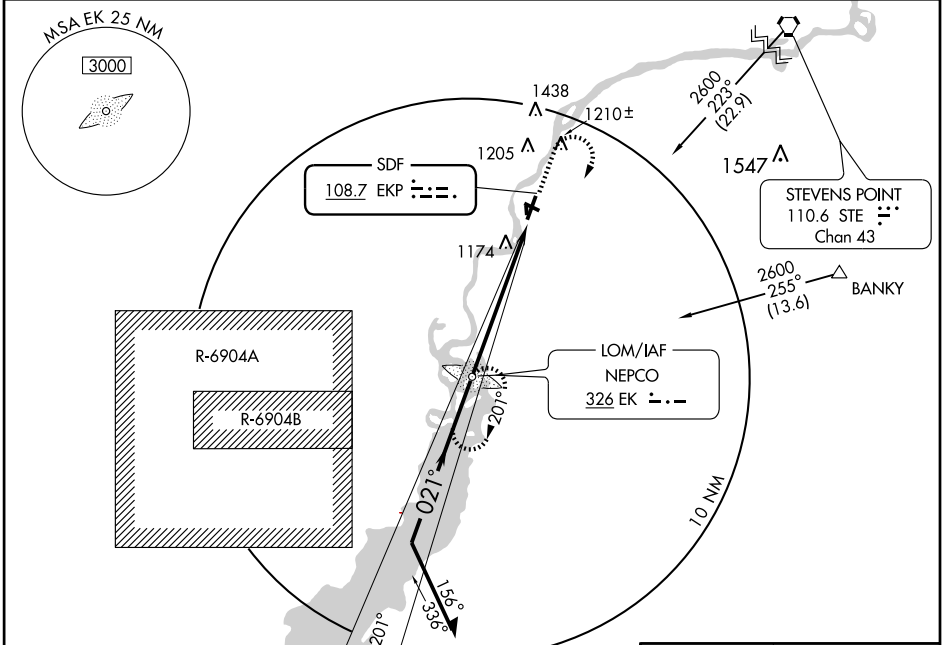
# SDF RWY 2

WISCONSIN RAPIDS/  
ALEXANDER FIELD SOUTH WOOD COUNTY (ISW)

SDF EKP <b>108.7</b>	APP CRS <b>021°</b>	Rwy ldg TDZE Apr Elev	<b>5500</b> <b>1018</b> <b>1021</b>
-------------------------	------------------------	-----------------------------	---

**⚠ NA** Procedure not authorized when R-6904 A and B active. MISSED APPROACH: Climb to 2600 then right turn direct EK LOM and hold.

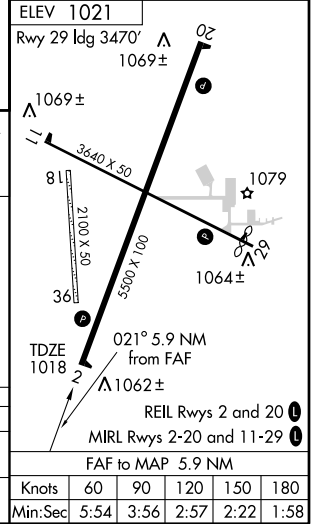
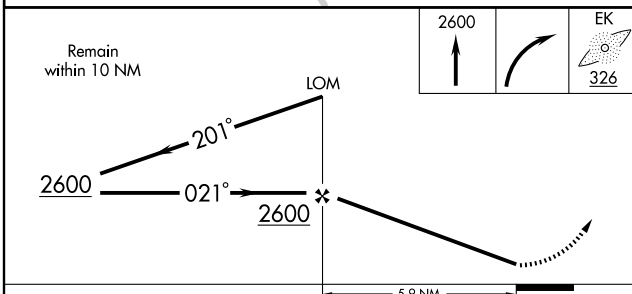
ASOS <b>126.575</b>	MINNEAPOLIS CENTER <b>124.4 317.7</b>	UNICOM <b>122.8 (CTAF) 0</b>
------------------------	--	---------------------------------



EC-3, 22 OCT 2009 to 19 NOV 2009

EC-3, 22 OCT 2009 to 19 NOV 2009

## ADF REQUIRED



CATEGORY	A	B	C	D
S-2	1360-1	342 (400-1)		1360-1½ 342 (400-1½)
CIRCLING	1480-1	459 (500-1)	1520-1½ 499 (500-1½)	1620-2 599 (600-2)

Knots	60	90	120	150	180
Min:Sec	5:54	3:56	2:57	2:22	1:58

# SDF RWY 2