

LOM EK 326	APP CRS 020°	Rwy Idg TDZE Apt Elev	5500 1018 1021
----------------------	------------------------	-----------------------------	---

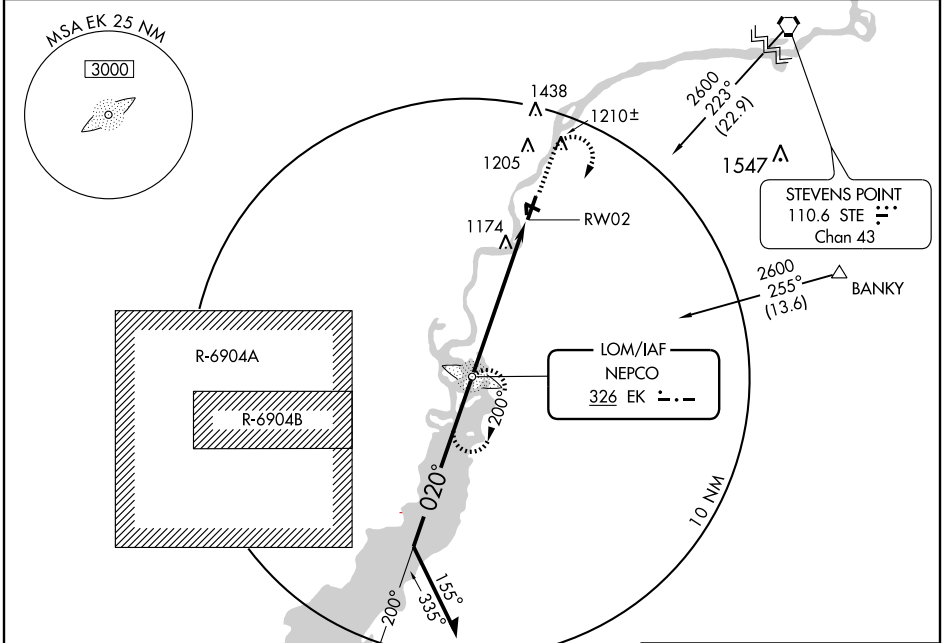
WISCONSIN RAPIDS/
ALEXANDER FIELD SOUTH WOOD COUNTY (ISW)

NDB or GPS RWY 2

▲ NA Procedure not authorized when R-6904 A and B active.

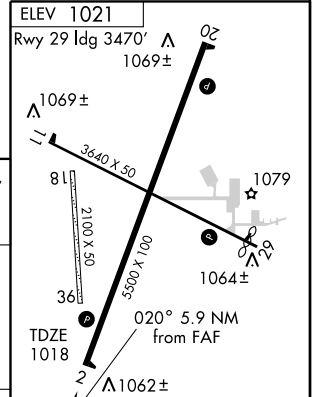
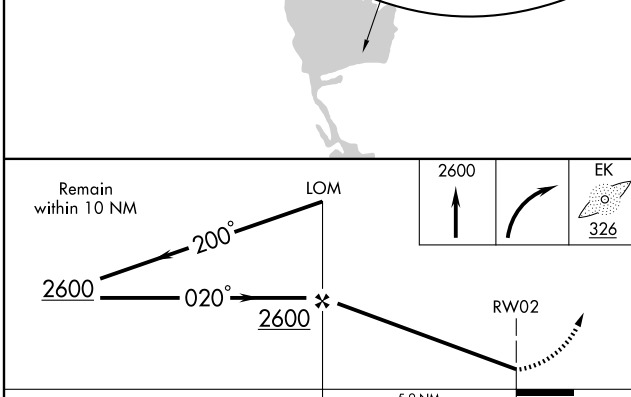
MISSED APPROACH: Climb to 2600 then right turn direct EK LOM and hold.

ASOS 126.575	MINNEAPOLIS CENTER 124.4 317.7	UNICOM 122.8 (CTAF) 0
------------------------	--	---------------------------------



EC-3, 22 OCT 2009 to 19 NOV 2009

EC-3, 22 OCT 2009 to 19 NOV 2009



CATEGORY	A	B	C	D
S-2	1480-1	462 (500-1)	1480-1½ 462 (500-1½)	1480-1½ 462 (500-1½)
CIRCLING	1480-1	459 (500-1)	1520-1½ 499 (500-1½)	1620-2 599 (600-2)

NDB or GPS RWY 2