

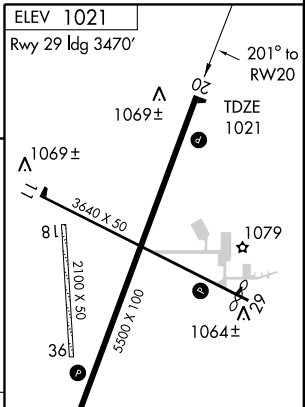
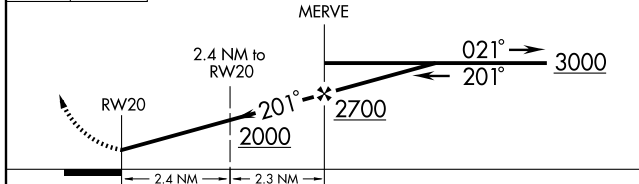
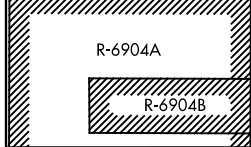
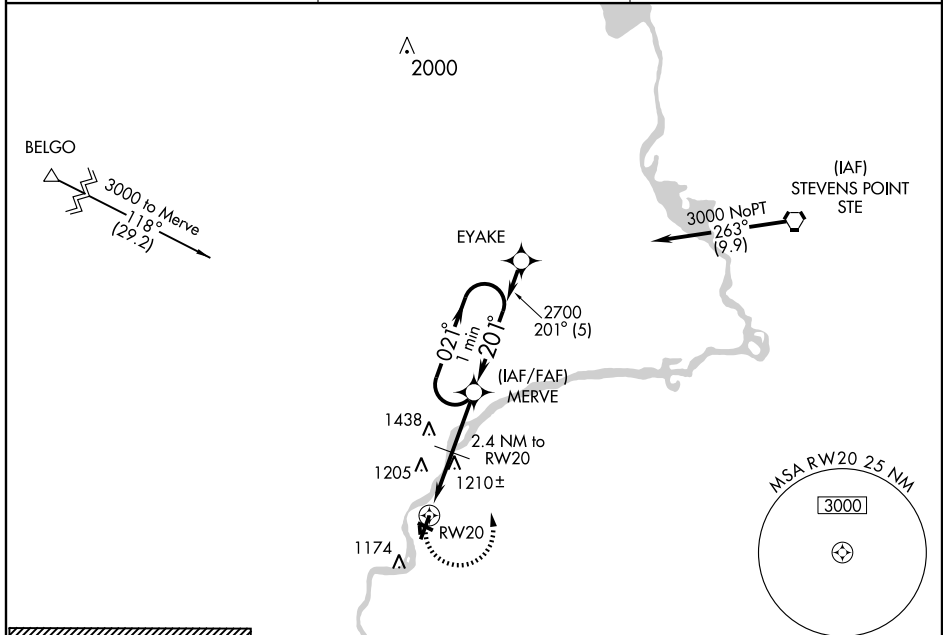
# GPS RWY 20

WISCONSIN RAPIDS/ALEXANDER FIELD SOUTH WOOD COUNTY (ISW)

APP CRS <b>201°</b>	Rwy Idg <b>5500</b>
	TDZE <b>1021</b>
	Apt Elev <b>1021</b>

<b>▲</b> NA	MISSED APPROACH: Climbing left turn to 3000 direct MERVE WP and hold.
-------------	---

ASOS <b>126.575</b>	MINNEAPOLIS CENTER <b>124.4 317.7</b>	UNICOM <b>122.8 (CTAF) 0</b>
------------------------	--	---------------------------------



CATEGORY	A	B	C	D
S-20	1460-1	439 (500-1)	1460-1½ 439 (500-1½)	1460-1½ 439 (500-1½)
CIRCLING	1480-1	459 (500-1)	1520-1½ 499 (500-1½)	1620-2 599 (600-2)

REIL Rwy 2 and 20 0  
MIRL Rwy 2-20 and 11-29 0

EC-3, 22 OCT 2009 to 19 NOV 2009

EC-3, 22 OCT 2009 to 19 NOV 2009

# GPS RWY 20