

OXFORD, OHIO

AL-5429 (FAA)

NDB or GPS RWY 5
OXFORD / MIAMI UNIVERSITY (OXD)

NDB OXD 282	APP CRS 042°	Rwy ldg 3741
		TDZE 1045
		Apt Elev 1045

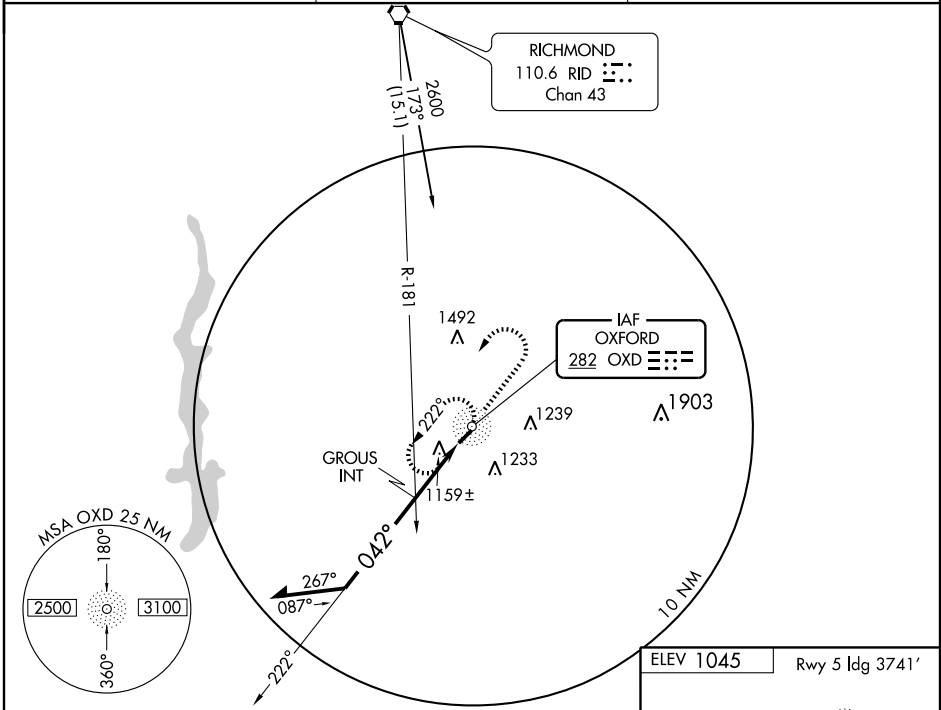
▼ Obtain local altimeter setting on CTAF; when not received, use Covington/Cincinnati/Northern Kentucky altimeter setting and increase all MDAs 100 feet and all visibilities ¼ mile.
▲ NA

MISSED APPROACH: Climb to 2600 then left turn direct OXD NDB and hold.

CINCINNATI APP CON
121.0 257.725

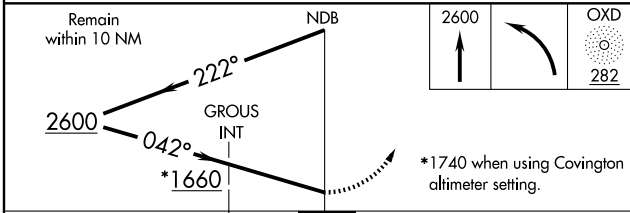
UNICOM
122.8 (CTAF)

122.9

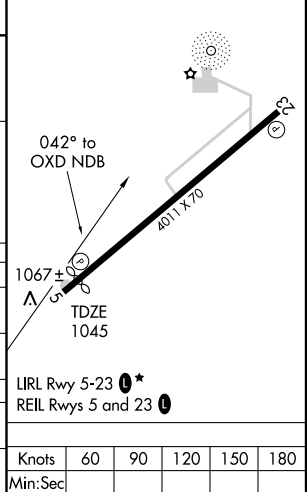


EC-2, 22 OCT 2009 to 19 NOV 2009

EC-2, 22 OCT 2009 to 19 NOV 2009



ELEV 1045 Rwy 5 ldg 3741'



CATEGORY	A	B	C	D
S-5	1660-1	615 (700-1)	1660-1¼ 615 (700-1¾)	NA
CIRCLING	1660-1	615 (700-1)	1660-1¼ 615 (700-1¾)	NA
GROUS FIX MINIMUMS				
S-5	1460-1	415 (500-1)	1460-1¼ 415 (500-1¼)	NA
CIRCLING	1460-1 415 (500-1)	1500-1 455 (500-1)	1600-1½ 555 (600-1½)	NA

LIRL Rwy 5-23 *
REIL Rwys 5 and 23

Knots	60	90	120	150	180
Min:Sec					

OXFORD, OHIO
Amdt 10A 07074

39°30'N - 84°47'W

OXFORD / MIAMI UNIVERSITY (OXD)
NDB or GPS RWY 5