

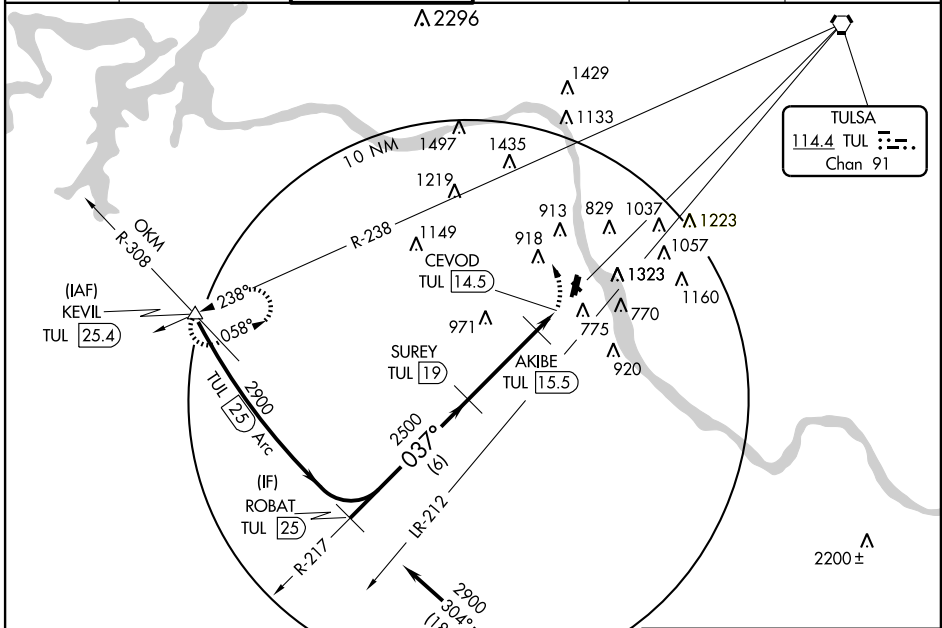
VORTAC TUL 114.4 Chan 91	APP CRS 037°	Rwy Idg TDZE Apt Elev	NA NA 638
--	------------------------	-----------------------------	--------------------------------------

VOR/DME-A
TULSA/RICHARD LLOYD JONES JR. (RVS)

When local altimeter setting not received, use Tulsa Intl altimeter setting and increase MDA 40 feet; increase Cat C/D visibilities ¼ mile. Circling NA northeast of Rwy 31 and 19L.

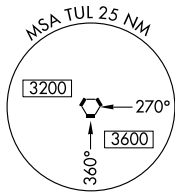
MISSED APPROACH: Climbing left turn to 2900 via heading 280° and TUL R-238 to KEVIL Int/TUL 25.4 DME and hold.

ATIS 126.5	TULSA APP CON 119.85	RIVERSIDE TOWER* 120.3 (CTAF) 0	GND CON 121.7	CLNC DEL 124.5	UNICOM 122.95
----------------------	--------------------------------	---	-------------------------	--------------------------	-------------------------

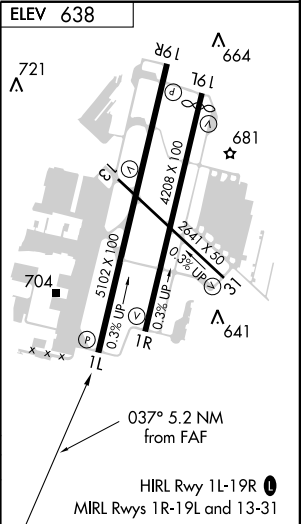


SC-1, 22 OCT 2009 to 19 NOV 2009

SC-1, 22 OCT 2009 to 19 NOV 2009



IAF
OKMULGEE
114.9 OKM
Chan 96



Procedure Turn NA	ROBAT TUL [25]	2900	037°	SUREY TUL [19]	2500	037°	AKIBE TUL [15.5]	1400	CEVOD TUL [14.5]
CATEGORY	A	B	C	D					
CIRCLING	1260-1 622 (700-1)	1280-1 642 (700-1)	1280-1 ¾ 642 (700-1 ¾)	1280-2 642 (700-2)					