

# VOR RWY 1L

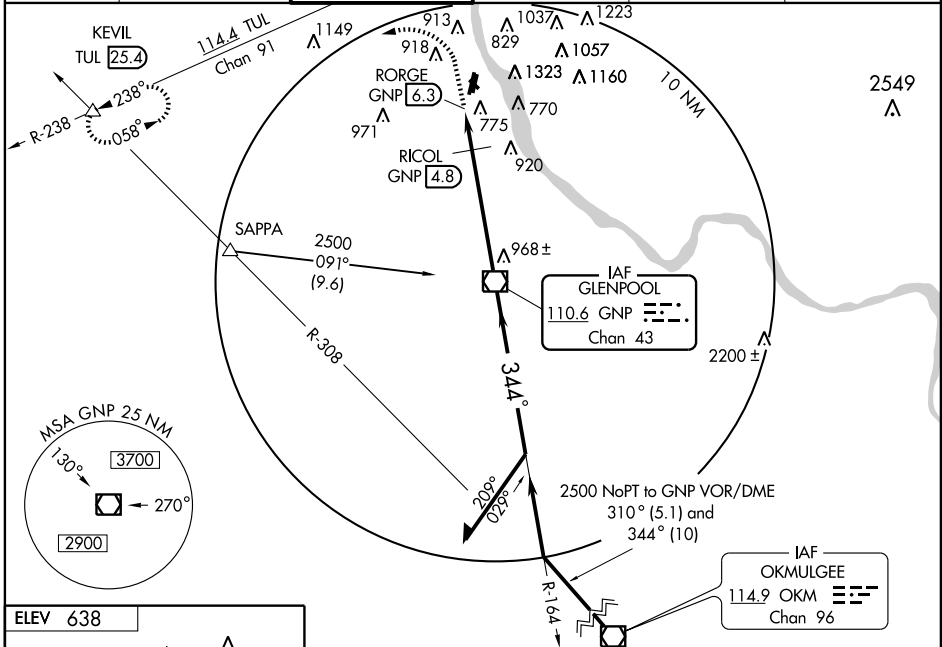
TULSA/ RICHARD LLOYD JONES JR. (RVS)

VOR/DME GNP <b>110.6</b> Chan <b>43</b>	APP CRS <b>344°</b>	Rwy Idg TDZE Apt Elev	<b>5102</b> <b>626</b> <b>638</b>
---	------------------------	-----------------------------	---

**⚠** Circling not authorized northeast of Rwy 31 and 19L.  
If local altimeter setting not received; use Tulsa Intl altimeter setting and increase all MDAs 40 ft.

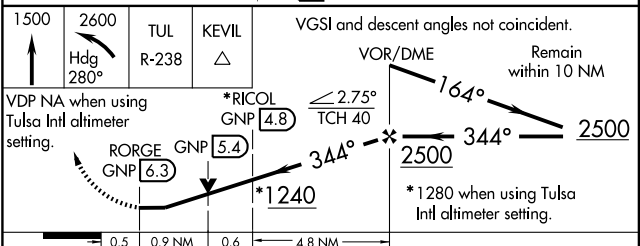
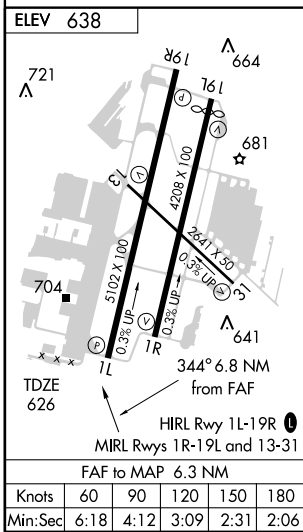
MISSED APPROACH: Climb to 1500 then climbing left turn to 2600 via heading 280° and TUL VORTAC R-238 to KEVIL Int and hold.

ATIS <b>126.5</b>	TULSA APP CON <b>119.85</b>	RIVERSIDE TOWER ★ <b>120.3</b> (CTAF) <b>0</b>	GND CON <b>121.7</b>	CLNC DEL <b>124.5</b>	UNICOM <b>122.95</b>
----------------------	--------------------------------	---	-------------------------	--------------------------	-------------------------



SC-1, 22 OCT 2009 to 19 NOV 2009

SC-1, 22 OCT 2009 to 19 NOV 2009



CATEGORY	A	B	C	D
S-1L	1240-1 614 (700-1)		1240-1 3/4 614 (700-1 3/4)	1240-2 614 (700-2)
CIRCLING	1260-1 622 (700-1)	1280-1 642 (700-1)	1280-1 3/4 642 (700-1 3/4)	1280-2 642 (700-2)
RICOL FIX MINIMUMS				
S-1L	1080-1 454 (500-1)		1080-1 1/4 454 (500-1 1/4)	1080-1 1/2 454 (500-1 1/2)
CIRCLING	1260-1 622 (700-1)	1280-1 642 (700-1)	1280-1 3/4 642 (700-1 3/4)	1280-2 642 (700-2)