

OWATONNA, MINNESOTA

AL-5426 (FAA)

ILS RWY 30

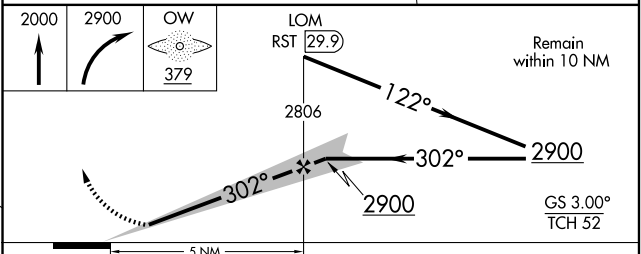
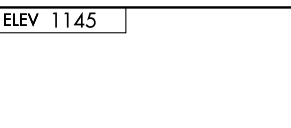
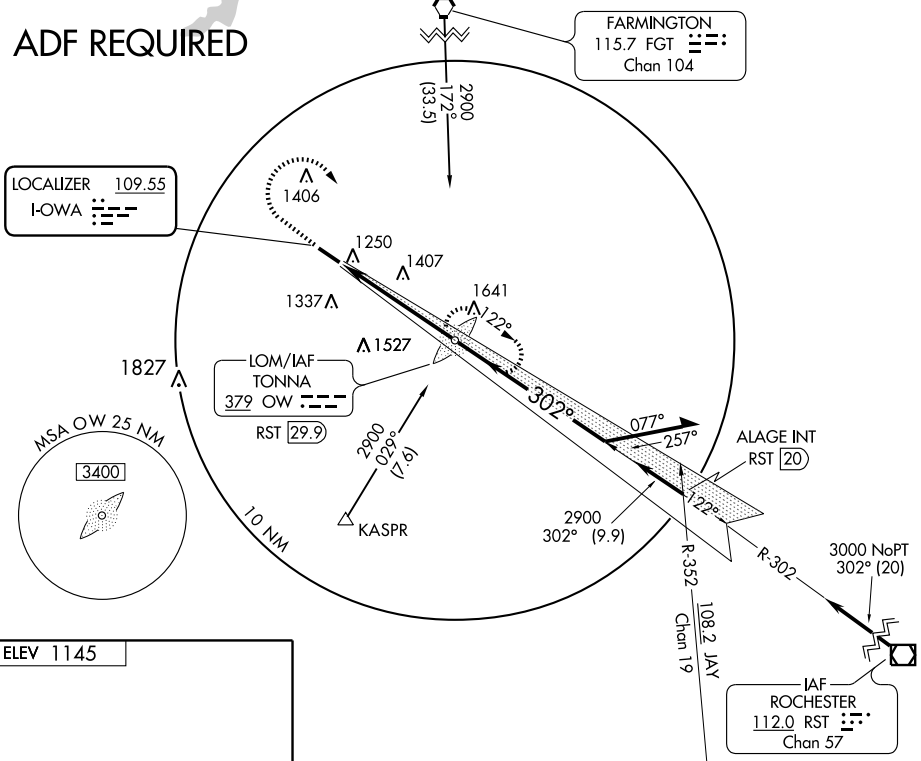
OWATONNA DEGNER RGNL (OWA)

LOC I-OWA 109.55	APP CRS 302°	Rwy Idg 5500
		TDZE 1145
		Apt Elev 1145

		MISSED APPROACH Climb to 2000 then climbing right turn to 2900 direct TONNA LOM and hold.

AWOS-3 128.325	ROCHESTER APP CON * 119.8 251.125	UNICOM 122.7 (CTAF) 0
--------------------------	---	---------------------------------

ADF REQUIRED



CATEGORY	A	B	C	D
S-ILS 30		1345-1/2	200 (200-1/2)	
S-LOC 30	1680-1/2	535 (600-1/2)	1680-1 535 (600-1)	1680-1 1/4 535 (600-1 1/4)
CIRCLING	1680-1	535 (600-1)	1720-1 1/2 575 (600-1 1/2)	1720-2 575 (600-2)

REIL Rwy 12 0
REIL Rwy 30
HIRL Rwy 12-30 0

FAF to MAP 5 NM

Knots	60	90	120	150	180
Min:Sec	5:00	3:20	2:30	2:00	1:40

OWATONNA, MINNESOTA

Amdt 1 08269

OWATONNA DEGNER RGNL (OWA)

44°07'N - 93°16'W

ILS RWY 30

NC-1, 22 OCT 2009 to 19 NOV 2009

NC-1, 22 OCT 2009 to 19 NOV 2009