

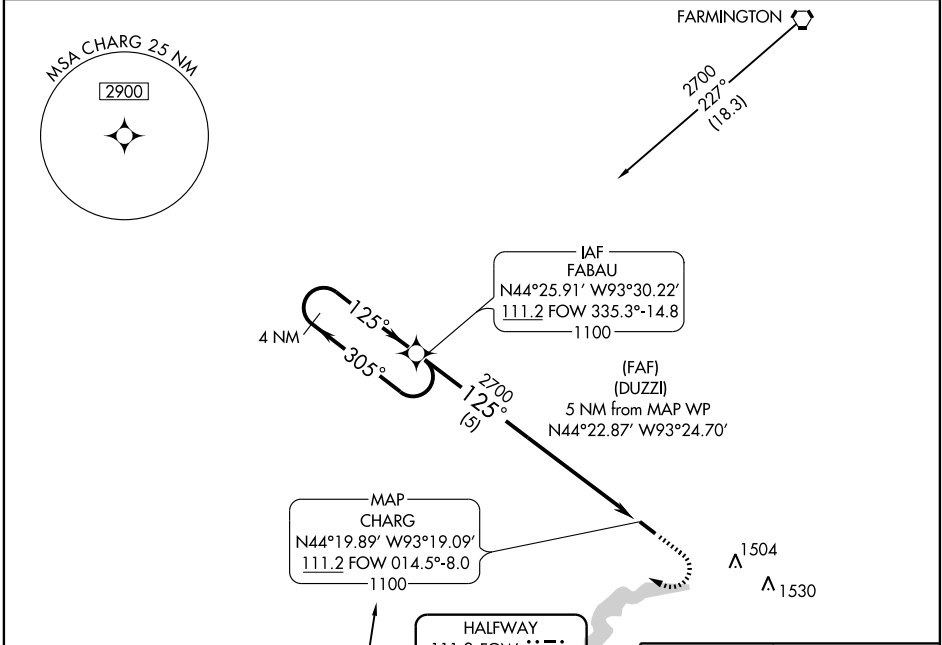
VOR/DME FOW 111.2 Chan 49	APP CRS 125°	Rwy Idg TDZE Apt Elev	4254 1060 1060
---	------------------------	-----------------------------	---

VOR/DME RNAV or GPS RWY 12

FARIBAULT MUNI (F'BL)

NA		MISSED APPROACH: Climb to 2700 then right turn direct FABAU WP and hold.	
----	--	--	--

AWOS-3 111.2	MINNEAPOLIS APP CON 134.7 284.7	GCO 121.725	UNICOM 122.8 (CTAF)
------------------------	---	-----------------------	-------------------------------



4 NM Holding Pattern	FABAU WP	(DUZZI) 5 NM from MAP WP	2700	FABAU
← 305°		↑	↪	
2700	← 125° →	2700		
		↓	↪	
		5 NM	5 NM	
				CHARG MAP WP

CATEGORY	A	B	C	D
S-12	1520-1	460 (500-1)	1520-1¼ 460 (500-1¼)	NA
CIRCLING	1520-1 460 (500-1)	1540-1 480 (500-1)	1540-1½ 480 (500-1½)	NA

REIL Rwy 12 and 30
MIRL Rwy 12-30

VOR/DME RNAV or GPS RWY 12

NC-1, 22 OCT 2009 to 19 NOV 2009

NC-1, 22 OCT 2009 to 19 NOV 2009