

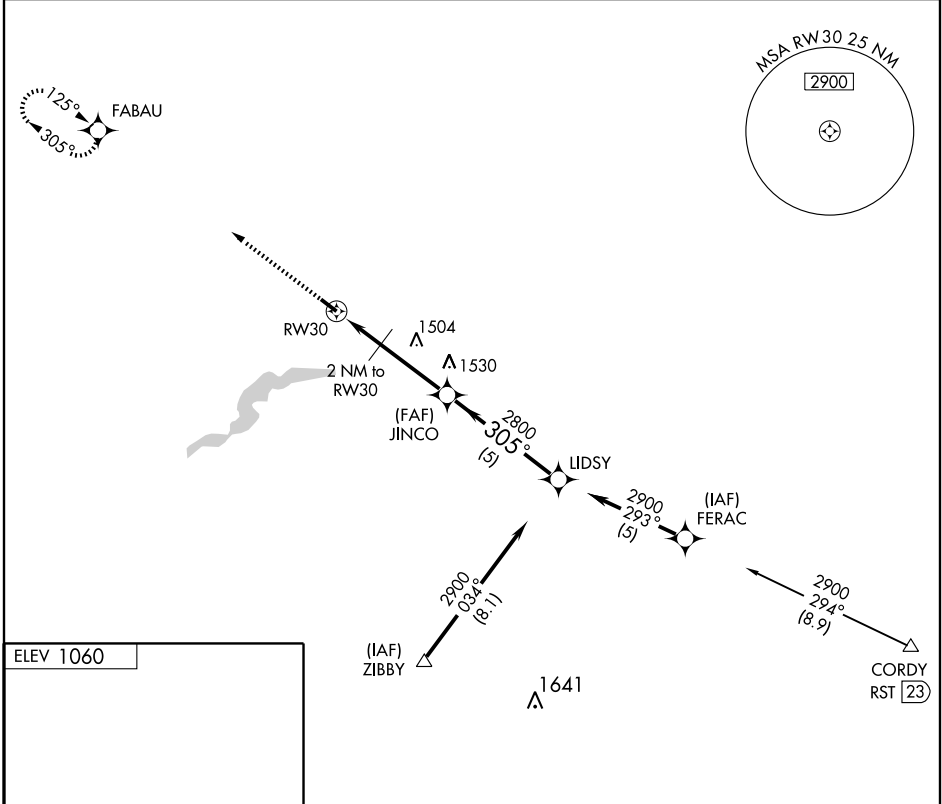
# GPS RWY 30

FARIBAULT MUNI (F'BL)

APP CRS	Rwy Idg	<b>4017</b>
<b>305°</b>	TDZE	<b>1055</b>
	Apt Elev	<b>1060</b>

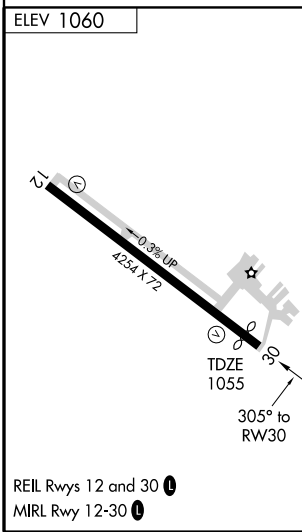
**▲ NA** MISSED APPROACH: Climb to 2700 direct FABAU WP and hold.

AWOS-3 <b>111.2</b>	MINNEAPOLIS APP CON <b>134.7 284.7</b>	GCO <b>121.725</b>	UNICOM <b>122.8 (CTAF)</b>
------------------------	---	-----------------------	-------------------------------



NC-1, 22 OCT 2009 to 19 NOV 2009

NC-1, 22 OCT 2009 to 19 NOV 2009



	2700 FABAU	JINCO		LIDSY
	↑	2800		2900
	↗	2800		2900
		2 NM to RW30	3 NM	5 NM
		1760	2800	2900
		Procedure Turn NA		
CATEGORY	A	B	C	D
S-30	1480-1	425 (500-1)	1480-1¼ 425 (500-1¼)	NA
CIRCLING	1520-1 460 (500-1)	1540-1 480 (500-1)	1540-1½ 480 (500-1½)	NA