

SOMERSET, KENTUCKY

AL-5424 (FAA)

WAAS CH 97510 W05A	APP CRS 048°	Rwy Idg TDZE Apt Elev	5287 927 927
--	------------------------	-----------------------------	---

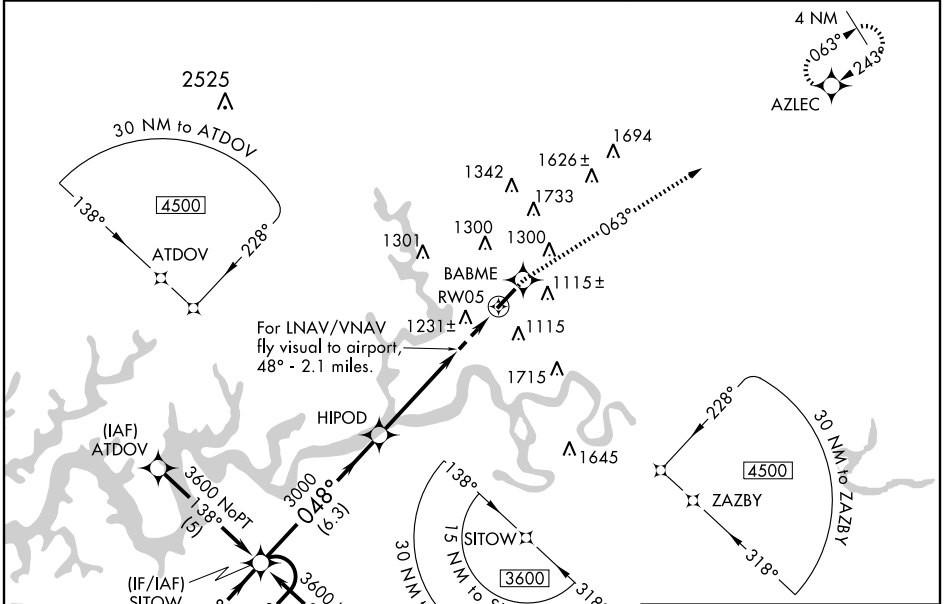
RNAV (GPS) Z RWY 5

SOMERSET / LAKE CUMBERLAND RGNL (SME)

Baro-VNAV NA when using Monticello altimeter setting.
 For uncompensated Baro-VNAV systems, LNAV/VNAV NA below -16°C (4°F) or above 47°C (116°F). DME/DME RNP-0.3 NA. Visibility reduction by helicopters NA.
 ⚠ Circling requires descent on glidepath to CMDA.
 When local altimeter not received, use Monticello altimeter setting and increase all DA 44 feet and all MDA 60 feet; increase LNAV/VNAV Cat. D and Circling Cat. C visibilities ¼ mile.

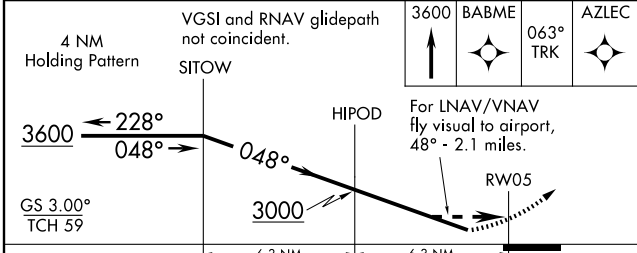
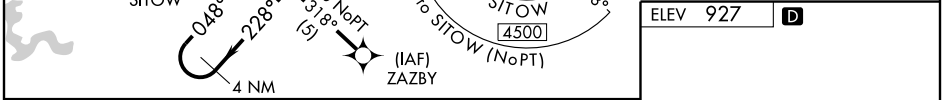
MISSED APPROACH:
 Climb to 3600 direct BABME and via 063° track to AZLEC and hold.

AWOS-3 120,050	INDIANAPOLIS CENTER 124.625 371.925	UNICOM 122.8 (CTAF)
--------------------------	---	-------------------------------

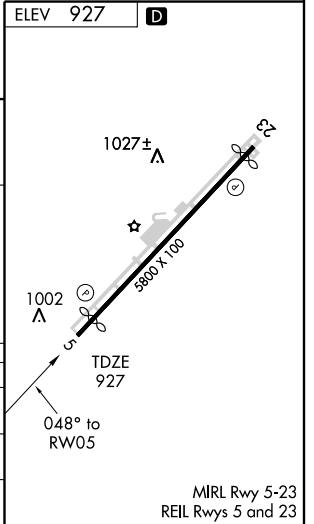


SE-1, 22 OCT 2009 to 19 NOV 2009

SE-1, 22 OCT 2009 to 19 NOV 2009



CATEGORY	A	B	C	D
LPV DA		1460-2	533 (600-2)	
LNAV/VNAV DA		1584-2	657 (700-2)	
CIRCLING	1620-2 693 (700-2)	1720-2 793 (800-2)	1720-2¼ 793 (800-2¼)	1740-2¾ 813 (900-2¾)



SOMERSET, KENTUCKY
 Amdt 1 09183

RNAV (GPS) Z RWY 5

SOMERSET / LAKE CUMBERLAND RGNL (SME)

37°03'N - 84°37'W

MIRL Rwy 5-23
 REIL Rwy 5 and 23