

RNAV (GPS) RWY 23

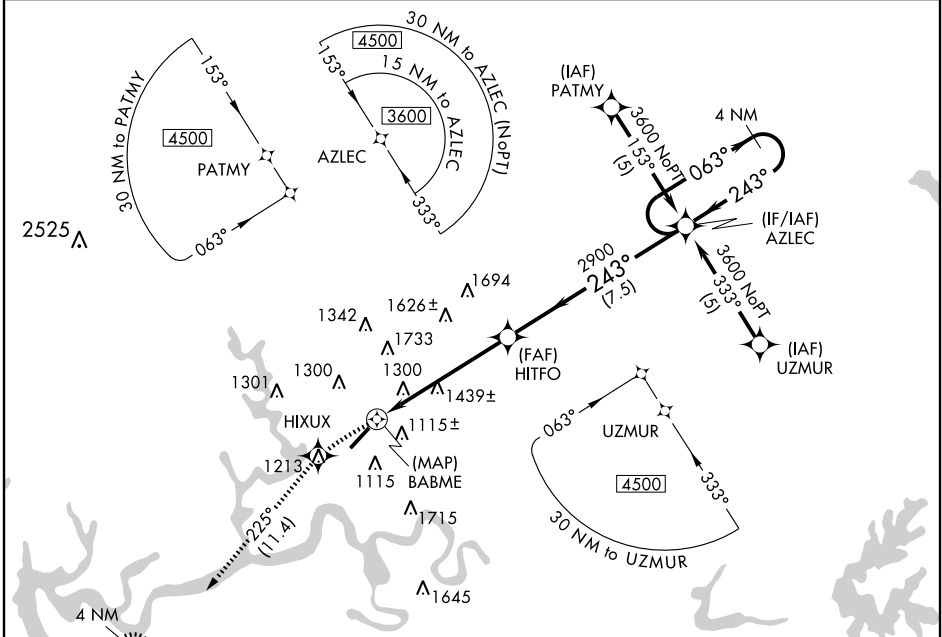
SOMERSET / LAKE CUMBERLAND RGNL (SME)

APP CRS	Rwy Idg	5500
243°	TDZE	927
	Apt Elev	927

▼ DME/DME RNP-0.3 NA. If local altimeter setting not received, use London altimeter setting and increase all MDAs 180 feet. Visibility reduction by helicopters NA.

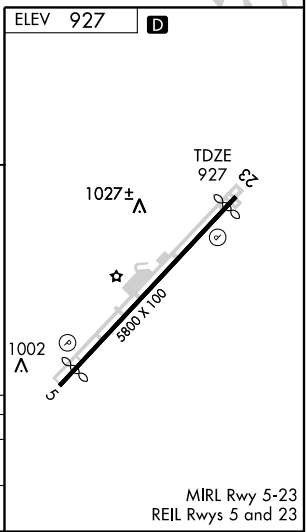
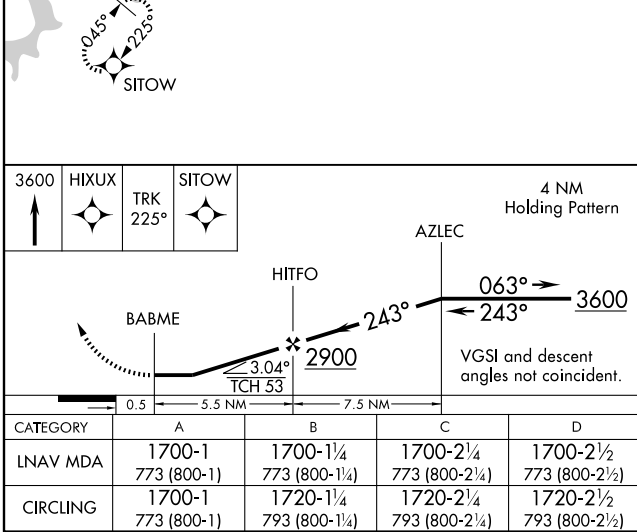
▲ MISSED APPROACH: Climb to 3600 direct HIXUX and via 225° track to SITOW and hold.

AWOS-3 120.050	INDIANAPOLIS CENTER 124.625 371.925	UNICOM 122.8 (CTAF)
--------------------------	---	-------------------------------



SE-1, 22 OCT 2009 to 19 NOV 2009

SE-1, 22 OCT 2009 to 19 NOV 2009



RNAV (GPS) RWY 23