

MARSHALLTOWN, IOWA

AL-5423 (FAA)

VOR/DME JWJ 109.4 Chan 31	APP CRS 318°	Rwy Idg TDZE Apt Elev	5006 973 974
--	------------------------	-----------------------------	---

VOR RWY 30
MARSHALLTOWN MUNI (MIW)

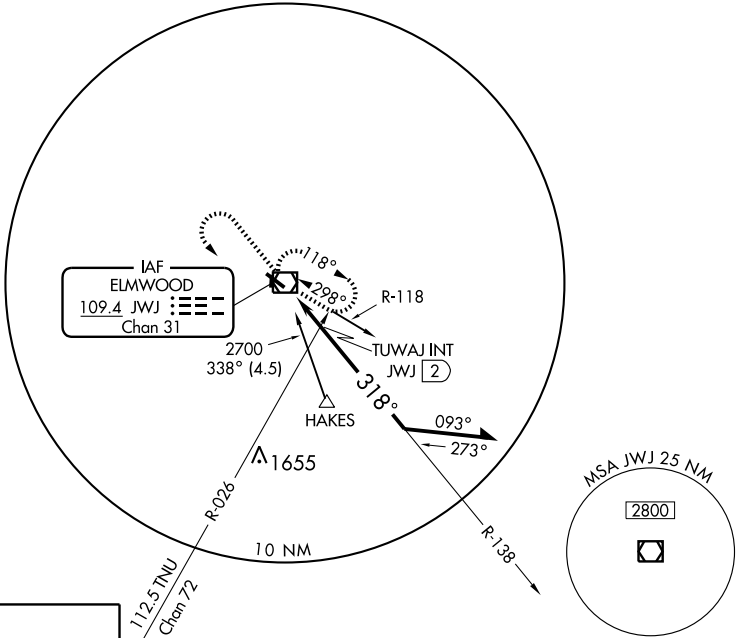
MISSED APPROACH: Climb to 2700, then left turn direct JWJ VOR/DME and hold.

ASOS
128.325

WATERLOO APP CON *
120.9

CLNC DEL
120.9

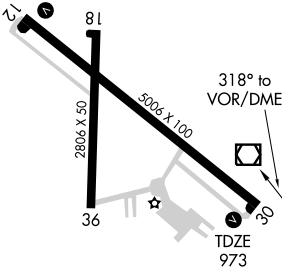
UNICOM
122.8 (CTAF) **0**



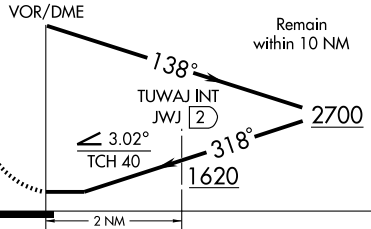
NC-3, 22 OCT 2009 to 19 NOV 2009

NC-3, 22 OCT 2009 to 19 NOV 2009

ELEV 974



MIRL Rwy 18-36
MIRL Rwy 12-30 **0**
REIL Rws 12 and 30 **0**



CATEGORY	A	B	C	D
S-30	1620-1	647 (700-1)	1620-1¾ 647 (700-1¾)	1620-2 647 (700-2)
CIRCLING	1620-1	646 (700-1)	1620-1¾ 646 (700-1¾)	1620-2 646 (700-2)
TUWAI FIX MINIMUMS				
S-30	1360-1 387 (400-1)		1360-1¼ 387 (400-1¼)	
CIRCLING	1420-1 446 (500-1)	1440-1 466 (500-1)	1440-1½ 466 (500-1½)	1540-2 566 (600-2)

MARSHALLTOWN, IOWA
Amdt 1 09071

42°07'N - 92°55'W

MARSHALLTOWN MUNI (MIW)
VOR RWY 30