

MARSHALLTOWN, IOWA

AL-5423 (FAA)

VOR/DME JJJ	APP CRS	Rwy Idg	5006
109.4	118°	TDZE	974
Chan 31		Apt Elev	974

VOR RWY 12
MARSHALLTOWN MUNI (MIW)

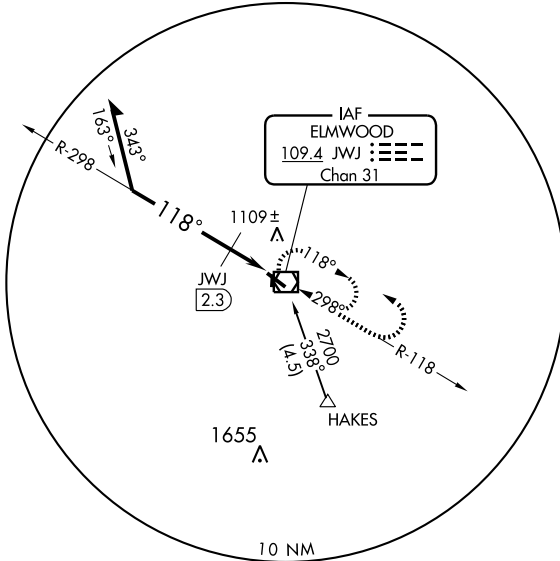
MISSED APPROACH: Climb to 2700, then left turn direct JJJ VOR/DME and hold.

ASOS
128.325

WATERLOO APP CON *
120.9

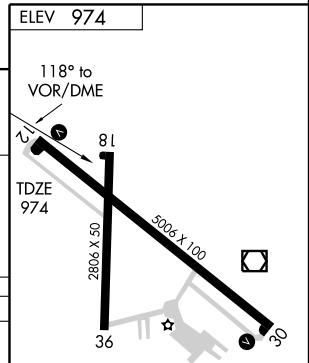
CLNC DEL
120.9

UNICOM
122.8 (CTAF) **0**



NC-3, 22 OCT 2009 to 19 NOV 2009

NC-3, 22 OCT 2009 to 19 NOV 2009

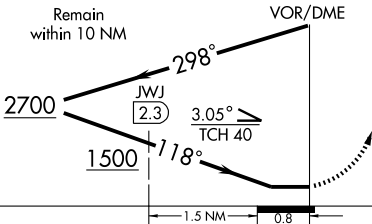


ELEV 974

118° to
VOR/DME
JJJ
109.4

TDZE
974

MIRL Rwy 18-36
MIRL Rwy 12-30 **0**
REIL Rwy 12 and 30 **0**



CATEGORY	A		B		C		D	
	S-12	1500-1	526 (600-1)	1500-1½	526 (600-1½)	1500-1¾	526 (600-1¾)	526 (600-1¾)
CIRCLING	1500-1	526 (600-1)	1500-1½	526 (600-1½)	1540-2	566 (600-2)	566 (600-2)	
DME MINIMUMS								
S-12	1360-1		386 (400-1)		1360-1¼		386 (400-1¼)	
CIRCLING	1420-1	1440-1	1440-1½	446 (500-1)	466 (500-1)	466 (500-1½)	1540-2	566 (600-2)

MARSHALLTOWN, IOWA

Amdt 1 09071

42°07'N - 92°55'W

MARSHALLTOWN MUNI (MIW)
VOR RWY 12