

CADILLAC, MICHIGAN

AL-5421 (FAA)

RNAV (GPS) RWY 25

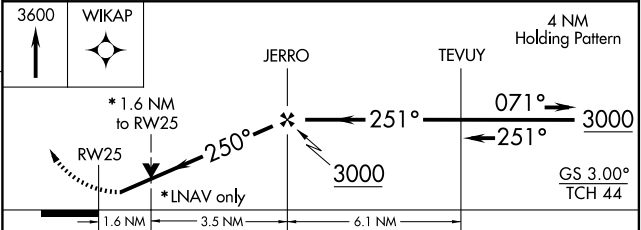
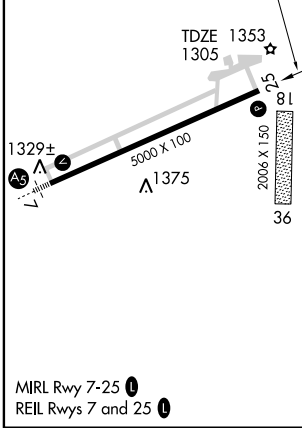
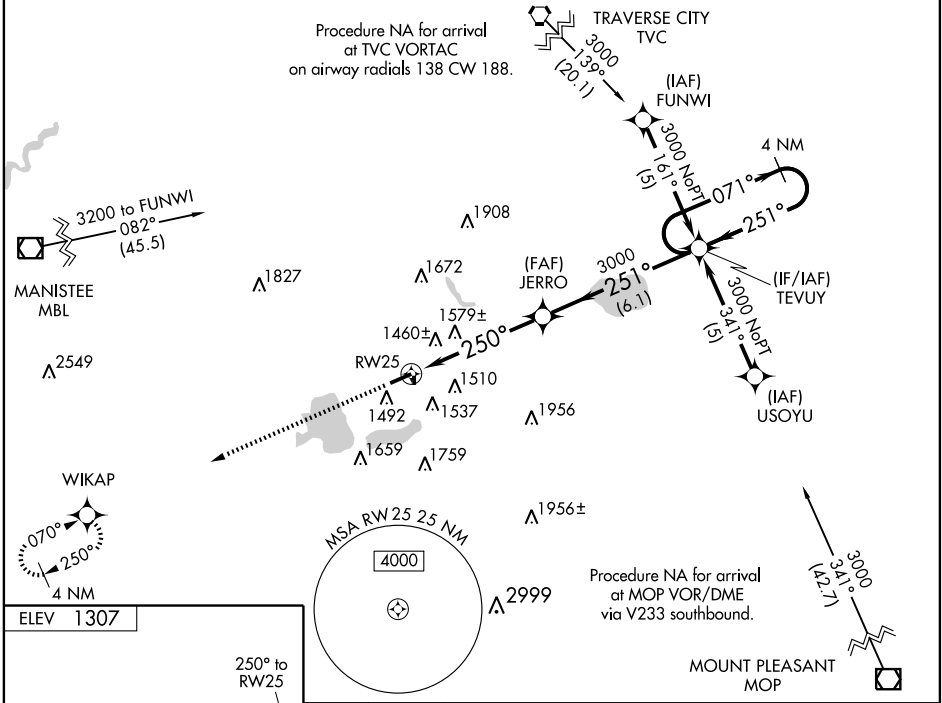
CADILLAC / WEXFORD COUNTY (CAD)

WAAS CH 97513 W25A	APP CRS 250°	Rwy Idg TDZE Apt Elev	5000 1305 1307
--	------------------------	-----------------------------	---

⚠ DME/DME RNP-0.3 NA. Visibility reduction by helicopters NA. For uncompensated Baro-VNAV systems, LNAV/VNAV NA below -17°C (2°F) or above 46°C (114°F).
⚠ Baro-VNAV and VDP NA when using Houghton Lake altimeter setting. When local altimeter setting not received, use Houghton Lake altimeter setting and increase all DA 137 feet, all MDA 140 feet, LPV and LNAV/VNAV visibilities all Cats ½ mile, LNAV visibilities Cats C and D ½ mile, Circling visibilities Cat C ½ mile and Cat D ¼ mile.

MISSED APPROACH: Climb to 3600 direct WIKAP and hold.

AWOS-3 128.325	MINNEAPOLIS CENTER 132.9 338.3	GCO 121.725	UNICOM 122.8 (CTAF) 0
--------------------------	--	-----------------------	---------------------------------



CATEGORY	A	B	C	D
LPV DA		1625-1¼	320 (400-1¼)	
LNAV/VNAV DA		1869-2	564 (600-2)	
LNAV MDA	1840-1	535 (600-1)	1840-1½ 535 (600-1½)	1840-1¾ 535 (600-1¾)
CIRCLING	1860-1	553 (600-1)	1860-1½ 553 (600-1½)	1880-2 573 (600-2)

CADILLAC, MICHIGAN
Orig 09183

44°17'N - 85°25'W

RNAV (GPS) RWY 25

EC-1, 22 OCT 2009 to 19 NOV 2009

EC-1, 22 OCT 2009 to 19 NOV 2009