

CADILLAC, MICHIGAN


AL-5421 (FAA)

NDB RWY 7

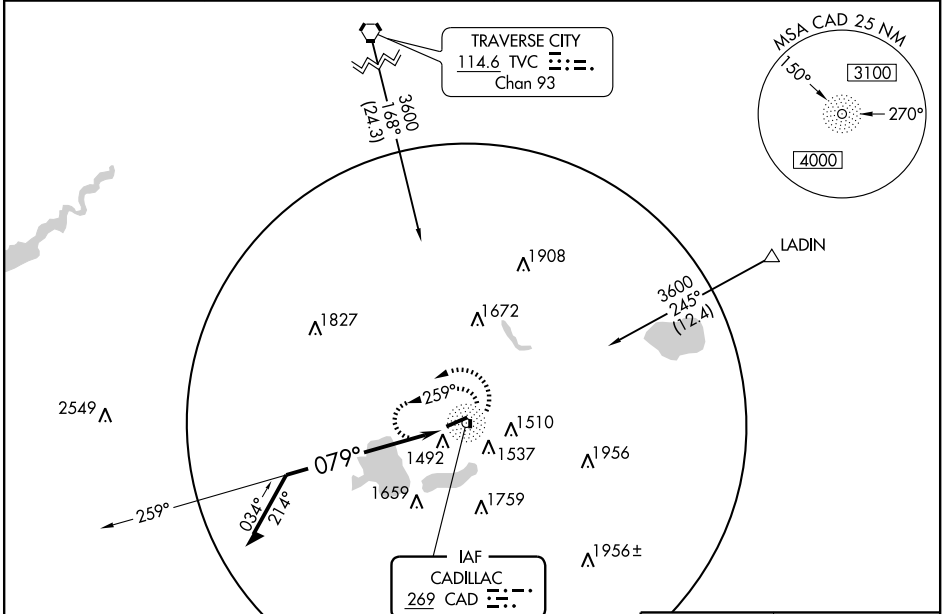
CADILLAC / WEXFORD COUNTY (CAD)

NDB CAD 269	APP CRS 079°	Rwy Idg 5000
		TDZE 1307
		Apt Elev 1307

⚠ When local altimeter setting not received, use Houghton Lake altimeter setting and increase all MDA 140 feet. Increase S-7 Cats B and D visibility ¼ mile, Cat C ½ mile, and Circling Cat A, B and D visibility ¼ mile, Cat C ½ mile. For inoperative MALSRS increase S-7 Cat B visibility to 1¼ miles. For inoperative MALSRS when using Houghton Lake altimeter setting increase S-7 Cat A visibility to 1¼ and Cat B to 1½ mile.

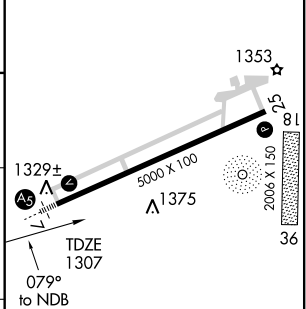
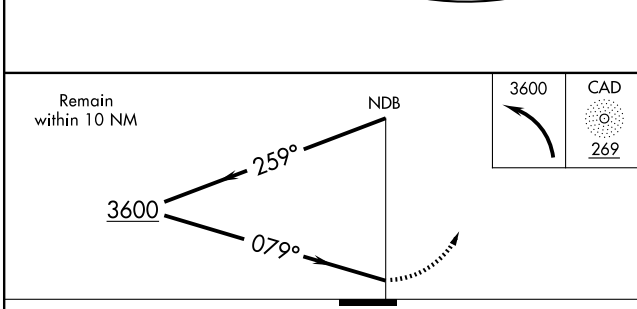
MALSRS

MISSED APPROACH:
 Climbing left turn to 3600 in CAD NDB holding pattern.

AWOS-3 128.325	MINNEAPOLIS CENTER 132.9 338.3	GCO 121.725	UNICOM 122.8 (CTAF)
--------------------------	--	-----------------------	-------------------------------



EC-1, 22 OCT 2009 to 19 NOV 2009

EC-1, 22 OCT 2009 to 19 NOV 2009



CATEGORY	A	B	C	D
S-7	2120-¾ 813 (900-¾)	813 (900-¾)	2120-2 813 (900-2)	2120-2½ 813 (900-2½)
CIRCLING	2120-1 813 (900-1)	2120-1¼ 813 (900-1¼)	2120-2½ 813 (900-2½)	2120-2¾ 813 (900-2¾)

MIRL Rwy 7-25
 REL Rws 7 and 25

CADILLAC, MICHIGAN
 Amdt 2 09183

44°17'N - 85°25'W

CADILLAC / WEXFORD COUNTY (CAD)
NDB RWY 7