

CADILLAC, MICHIGAN

AL-5421 (FAA)

# NDB RWY 25

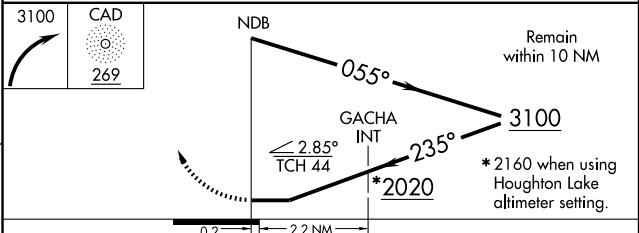
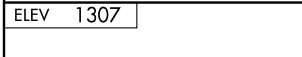
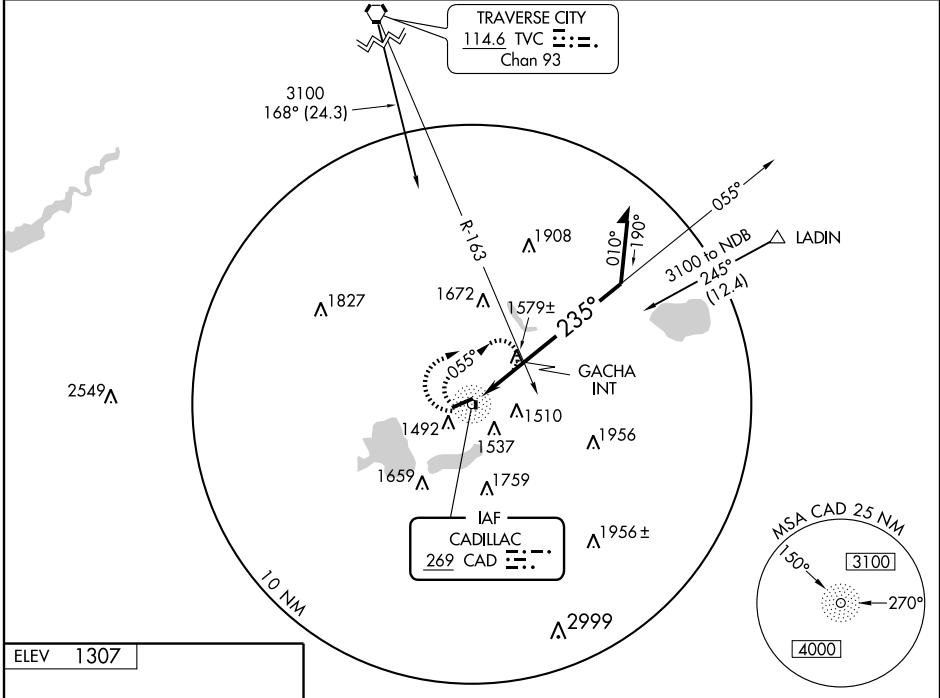
CADILLAC / WEXFORD COUNTY (CAD)

|                       |                        |                         |
|-----------------------|------------------------|-------------------------|
| NDB CAD<br><b>269</b> | APP CRS<br><b>235°</b> | Rwy Idg<br><b>5000</b>  |
|                       |                        | TDZE<br><b>1305</b>     |
|                       |                        | Apt Elev<br><b>1307</b> |

**⚠** Visibility reduction by helicopters NA. When local altimeter setting not received, use Houghton Lake altimeter setting and increase all MDA 140 feet, S-25 and Circling visibilities Cat B ¼ mile, Cats C and D ½ mile. Increase GACHA fix minimums S-25 visibilities Cat C and D ½ mile, Circling Cat C ½ mile, Cat D ¼ mile.

**⚠** MISSED APPROACH: Climbing right turn to 3100 in CAD NDB holding pattern.

|                          |  |                       |                                 |
|--------------------------|--|-----------------------|---------------------------------|
| AWOS-3<br><b>128.325</b> | MINNEAPOLIS CENTER<br><b>132.9 338.3</b> | GCO<br><b>121.725</b> | UNICOM<br><b>122.8 (CTAF) 0</b> |
|--------------------------|--|-----------------------|---------------------------------|



| CATEGORY       | A      | B           | C                       | D                       |
|----------------|--------|-------------|-------------------------|-------------------------|
| S-25           | 2020-1 | 715 (800-1) | 2020-2<br>715 (800-2)   | 2020-2¼<br>715 (800-2¼) |
| CIRCLING       | 2020-1 | 713 (800-1) | 2020-2<br>713 (800-2)   | 2020-2¼<br>713 (800-2¼) |
| GACHA MINIMUMS |        |             |                         |                         |
| S-25           | 1880-1 | 575 (600-1) | 1880-1½<br>575 (600-1½) | 1880-1¾<br>575 (600-1¾) |
| CIRCLING       | 1880-1 | 573 (600-1) | 1880-1½<br>573 (600-1½) | 1880-2<br>573 (600-2)   |

CADILLAC, MICHIGAN  
Amdt 2 09183

44°17'N - 85°25'W

CADILLAC / WEXFORD COUNTY (CAD)

# NDB RWY 25

EC-1, 22 OCT 2009 to 19 NOV 2009

EC-1, 22 OCT 2009 to 19 NOV 2009