

ALBERT LEA, MINNESOTA

AL-5420 (FAA)

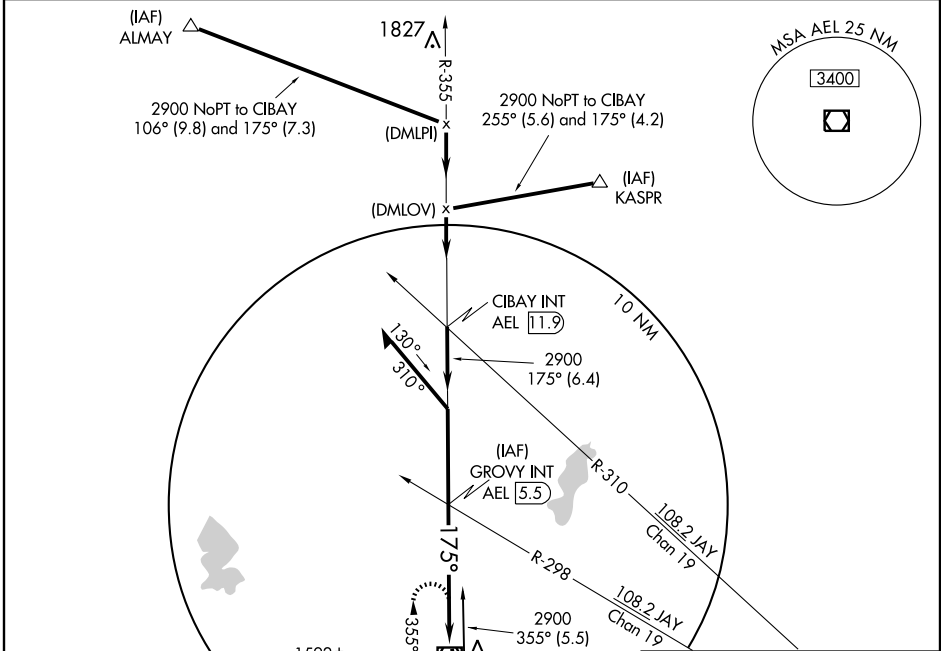
VOR RWY 16

ALBERT LEA MUNI (A.E.L.)

VOR/DME AEL	APP CRS	Rwy Idg	4501
109.8	175°	TDZE	1259
Chan 35		Apt Elev	1259

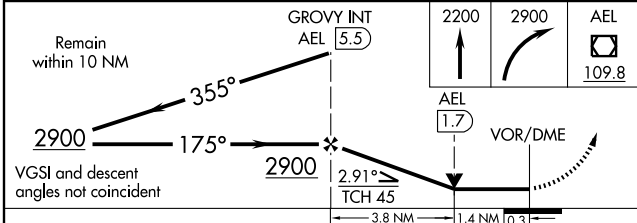
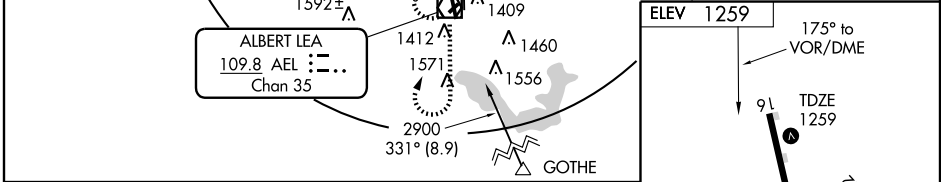
NA MISSED APPROACH: Climb to 2200 then climbing right turn to 2900 direct AEL VOR/DME and hold.

AWOS-3 109.8	ROCHESTER APP CON * 119.8 251.125	UNICOM 123.0 (CTAF) 0
------------------------	---	---------------------------------

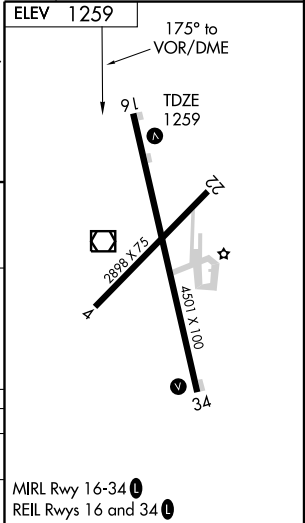


NC-1, 22 OCT 2009 to 19 NOV 2009

NC-1, 22 OCT 2009 to 19 NOV 2009



CATEGORY	A	B	C	D
S-16	1720-1 461 (500-1)		1720-1 ¼ 461 (500-1 ¼)	1720-1 ½ 461 (500-1 ½)
CIRCLING	1780-1 521 (600-1)		1780-1 ½ 521 (600-1 ½)	1820-2 561 (600-2)



ALBERT LEA, MINNESOTA
Orig 09015

43°41'N - 93°22'W

ALBERT LEA MUNI (A.E.L.) VOR RWY 16