

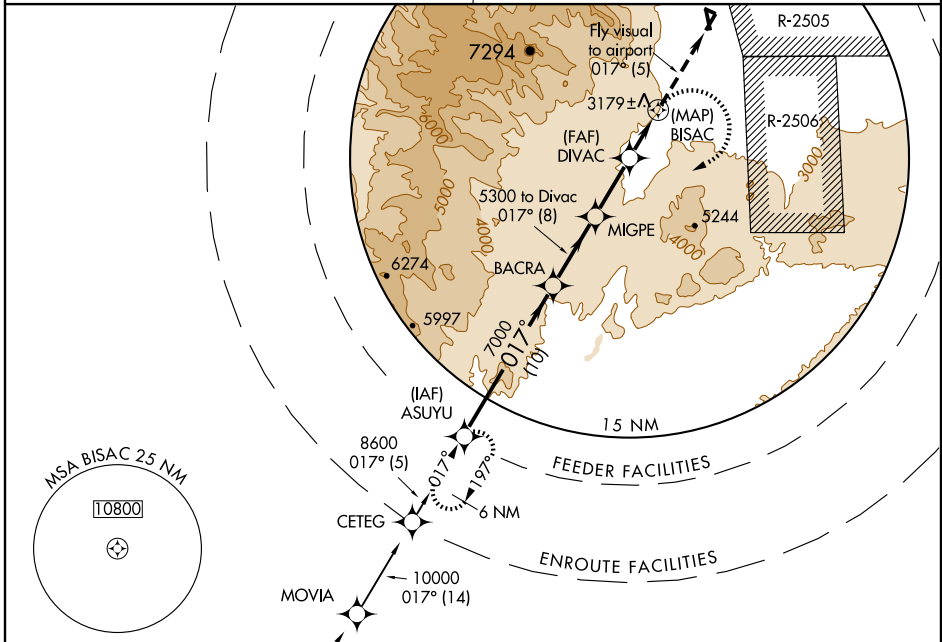
RNAV (GPS) Y RWY 2 INYOKERN (IYK)

APP CRS 017°	Rwy Idg 6275
	TDZE 2442
	Apt Elev 2457

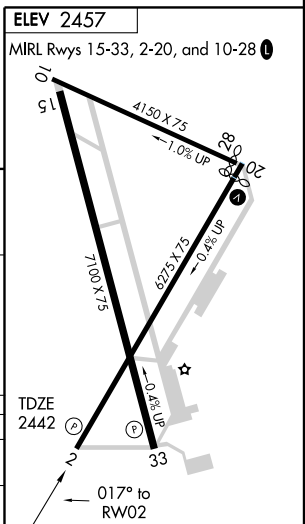
⚠ GPS or RNP-0.3 required. DME/DME RNP-0.3 NA.
⚠ NA Except for operators with approved weather reporting service, use NAS China Lake altimeter setting, if not available procedure NA. Procedure NA at night.

MISSED APPROACH: Climbing right turn to 8600 direct MIGPE WP then left turn via 197° track to ASUYU WP and hold.

JOSHUA APP CON 133.65 348.7	UNICOM 122.8 (CTAF)
---------------------------------------	-------------------------------



ASUYU	BACRA	MIGPE	ASUYU
8600	7000	5300	
017°	017°	197°	
Procedure Turn NA			
	10 NM	8 NM	3 NM
		3.32°	TCH 40
CATEGORY	A	B	C
LNVA MDA	4100-2 1658 (1700-2)	4100-3 1658 (1700-3)	NA
CIRCLING	4100-2 1643 (1700-2)	4100-3 1643 (1700-3)	NA



SW-3, 22 OCT 2009 to 19 NOV 2009

SW-3, 22 OCT 2009 to 19 NOV 2009