

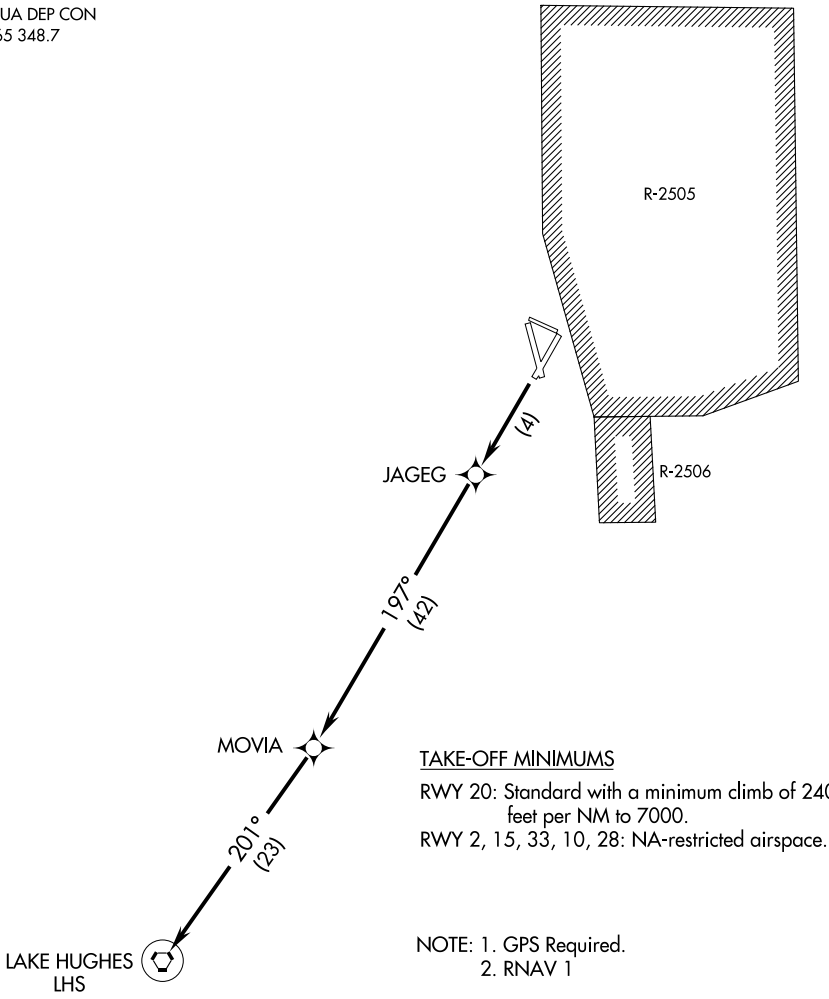
LAKE HUGHES TWO DEPARTURE (RNAV) (OBSTACLE)

INYOKERN (IYK)
INYOKERN, CALIFORNIA

JOSHUA DEP CON
133.65 348.7

SW-3, 22 OCT 2009 to 19 NOV 2009

SW-3, 22 OCT 2009 to 19 NOV 2009



TAKE-OFF MINIMUMS

RWY 20: Standard with a minimum climb of 240 feet per NM to 7000.
 RWY 2, 15, 33, 10, 28: NA-restricted airspace.

NOTE: 1. GPS Required.
 2. RNAV 1

NOTE: Chart not to scale.



DEPARTURE ROUTE DESCRIPTION

TAKE-OFF RUNWAY 20: Climb direct JAGEG then continue climb to 8000 via 197° track to MOVIA and 201° track to LHS VORTAC. Thence via assigned route and altitude.

TAKE-OFF RUNWAYS 2, 33, 15, 10, and 28: NA.