

(RICHY5.SWR) 08157

# RICHY FIVE DEPARTURE

SL-5416 (FAA)

SOUTH LAKE TAHOE/ LAKE TAHOE (T\VL)  
SOUTH LAKE TAHOE, CALIFORNIA

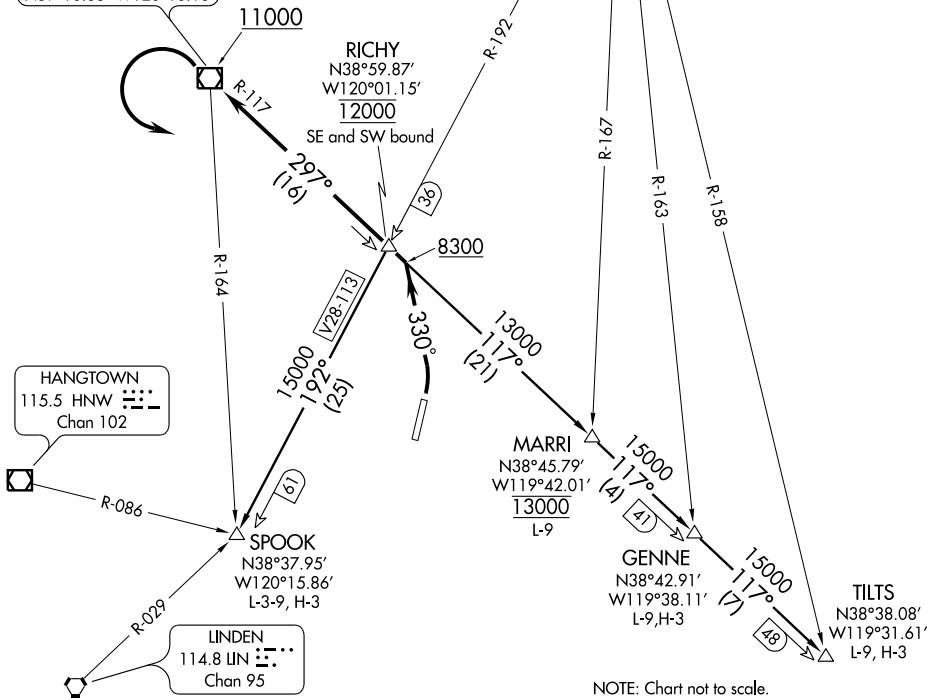
MINIMUM CROSSING ALTITUDE: at RICHY INT  
Northwest-bound direct SWR VOR/DME 8300'

NOTE: This SID requires a minimum climb rate of  
400 feet per NM to 10000'.

OAKLAND CENTER  
127.95 316.1  
CLNC DEL  
134.3  
CTAF 122.95

MUSTANG  
117.9 FMG  
Chan 126

SQUAW VALLEY  
113.2 SWR  
Chan 79  
N39°10.83'-W120°16.18'



SW-2, 22 OCT 2009 to 19 NOV 2009

SW-2, 22 OCT 2009 to 19 NOV 2009

NOTE: Chart not to scale.

## DEPARTURE ROUTE DESCRIPTION

**TAKE-OFF RUNWAY 36:** Turn left heading 330°. Intercept SWR R-117 at or above 8300', continue climb northwest bound on SWR R-117 to SWR VOR/DME. Cross SWR VOR/DME at or above 11000'. Aircraft cleared via a transition, reverse course to the left after crossing the SWR VOR/DME, and proceed to RICHY INT via SWR R-117. Cross RICHY INT at 12000' southeast and southwest bound, thence (via transition).

**GENNE TRANSITION (RICHY5.GENNE):** From over RICHY INT via SWR R-117 to GENNE INT. Cross MARRI INT at 13000'. Expect further clearance to filed altitude after MARRI INT.

**MARRI TRANSITION (RICHY5.MARRI):** From over RICHY INT via SWR R-117 to MARRI INT. Cross MARRI INT at 13000'. Expect further clearance to filed altitude after MARRI INT.

**SPOOK TRANSITION (RICHY5.SPOOK):** From over RICHY INT via SWR R-117 to SPOOK INT. Expect further clearance to filed altitude after SPOOK INT.

**TILTS TRANSITION (RICHY5.TILTS):** From over RICHY INT via SWR R-117 to TILTS INT. Cross MARRI INT at 13000'. Expect further clearance to filed altitude after MARRI INT.

# RICHY FIVE DEPARTURE

(RICHY5.SWR) 08157

SOUTH LAKE TAHOE, CALIFORNIA  
SOUTH LAKE TAHOE/ LAKE TAHOE (T\VL)