

SITKA, ALASKA

AL-5414 (FAA)

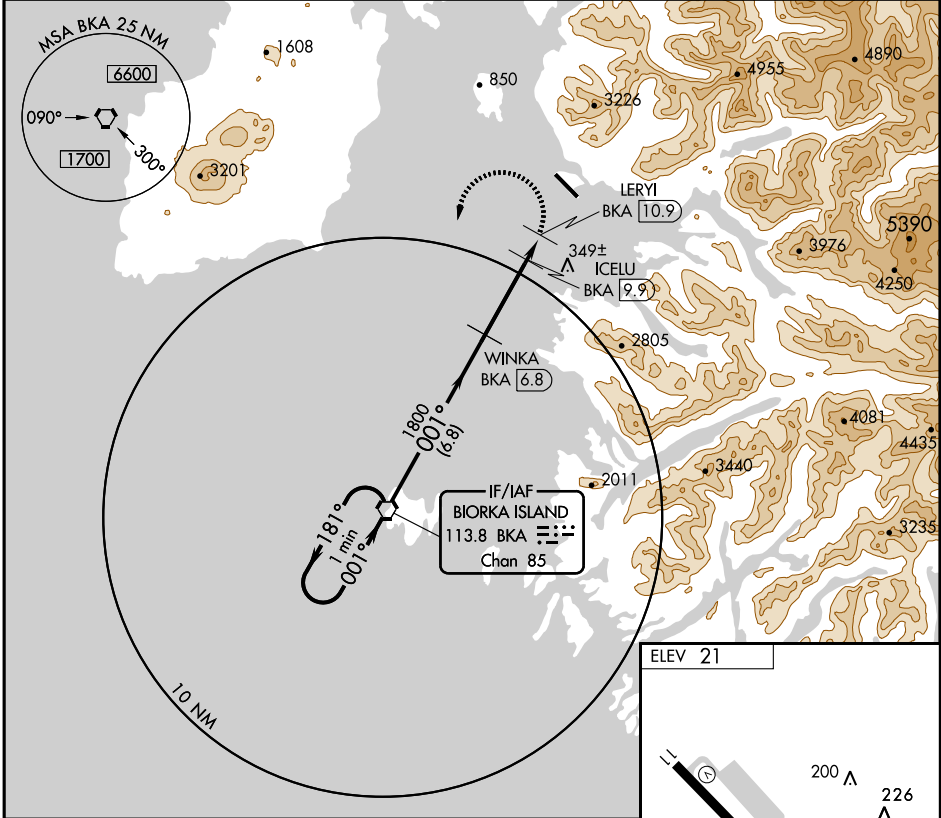
VOR/DME-A SITKA ROCKY GUTIERREZ (SIT) (PASI)

VORTAC BKA 113.8 Chan 85	APP CRS 001°	Rwy Idg TDZE Apt Elev N/A N/A 21
--	------------------------	--

▼ When local altimeter setting not received, procedure NA.
▲ Circling NA north of runway 11-29.

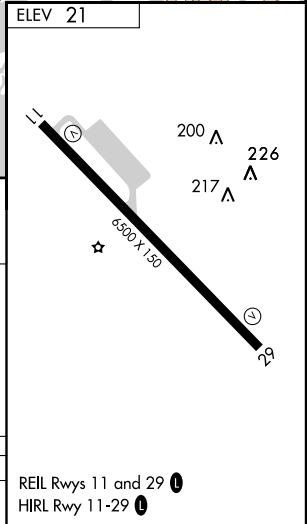
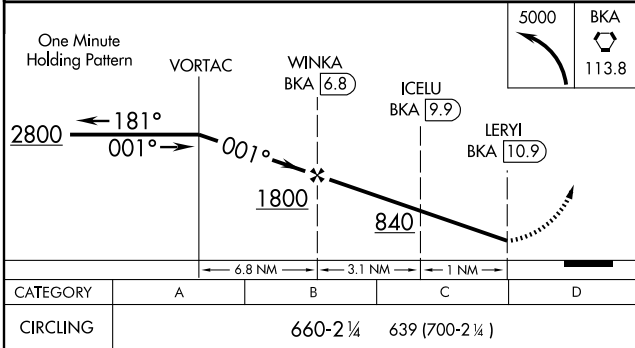
MISSED APPROACH: Climbing left turn to 5000 direct BKA VORTAC and hold, continue climb-in-hold to 5000.

ATIS 135.9	ANCHORAGE CENTER 126.1 335.5	SITKA RADIO 123.6 (CTAF) 0 122.2	UNICOM 122.95
----------------------	--	---	-------------------------



AK, 22 OCT 2009 to 17 DEC 2009

AK, 22 OCT 2009 to 17 DEC 2009



SITKA, ALASKA
Orig 08269

57° 03' N-135° 22' W

SITKA ROCKY GUTIERREZ (SIT) (PASI) VOR/DME-A