

(STKA7.SSR) 09127

SITKA SEVEN DEPARTURE

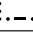
SL-5414 (FAA)

SITKA ROCKY GUTIERREZ (SIT) (PASI)

SITKA, ALASKA

ATIS 135.9
ANCHORAGE CENTER
126.1 335.5
SITKA RADIO
123.6 (CTAF) 122.2

SISTERS ISLAND
114.0 SSR 
Chan 87
N58°10.66'-W135°15.53'
L-1, H-1

ELEPHANT
391 EEF 
N58°10.26'-W135°15.48'
L-1

WARNING: High Terrain all Quadrants
Mount Edgcumbe 3201' 13 NM
SW of Sitka.

TAKE-OFF OBSTACLES

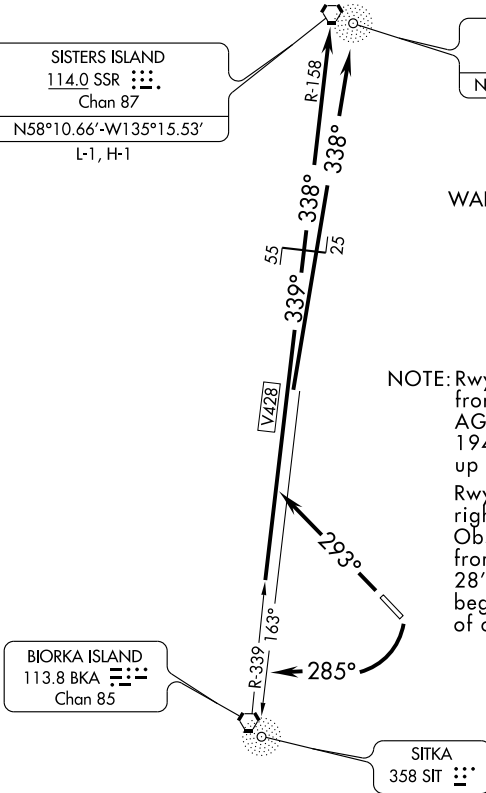
NOTE: Rwy 11: Multiple trees beginning 2611' from DER, 753' left of centerline, 100' AGL/198' MSL. Multiple trees beginning 1942' from DER, 569' right of centerline, up to 100' AGL/136' MSL.

Rwy 29: Tree, 401' from DER, 579' right of centerline, 41' AGL/55' MSL. Obstruction Lighting/Windsock 81' from DER, 415' right of centerline, 28' AGL/38' MSL. Multiple bushes beginning 157' from DER, 457' right of centerline, up to 24' AGL/34' MSL.

TAKE-OFF MINIMUMS:

Runway 11, Standard with the following minimum climb requirements: 180 knots or less, 390' per NM to 4500; more than 180 knots, 640' per NM to 3400. Runway 29, Standard with minimum climb of 357' per NM to 5400.

NOTE: Chart not to scale.



AK, 22 OCT 2009 to 17 DEC 2009

AK, 22 OCT 2009 to 17 DEC 2009

DEPARTURE ROUTE DESCRIPTION

TAKE-OFF RUNWAY 11: Climbing right turn to heading 285° to join V428 to SSR VORTAC or SIT 343° bearing from SIT NDB and EEF 338° bearing to EEF NDB.

TAKE-OFF RUNWAY 29: Climb via heading 293° to join V428 to SSR VORTAC or SIT 343° bearing from SIT NDB and EEF 338° bearing to EEF NDB.

SITKA SEVEN DEPARTURE

(STKA7.SSR) 09127

SITKA, ALASKA
SITKA ROCKY GUTIERREZ (SIT) (PASI)