

BIORKA ONE DEPARTURE (OBSTACLE)

ATIS 135.9
ANCHORAGE CENTER
126.1 335.5
SITKA RADIO
123.6 (CTAF)
UNICOM 122.95

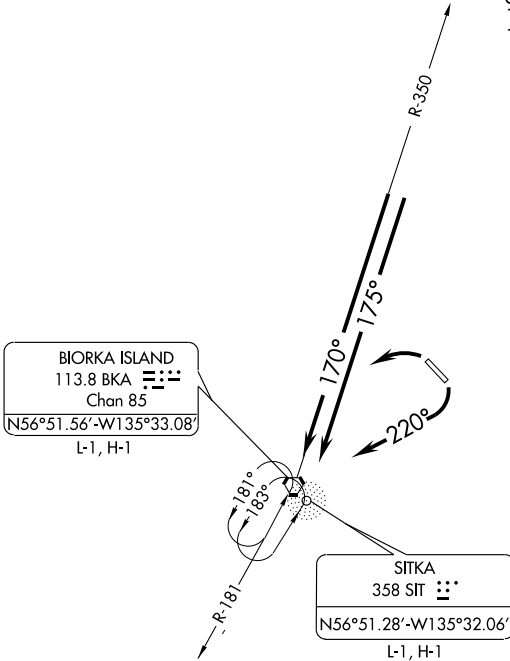
TAKE-OFF OBSTACLES

NOTE: Rwy 11: Multiple trees beginning 2611' from DER, 753' left of centerline, up to 100' AGL/198' MSL. Multiple trees 1942' from DER, 569' right of centerline, up to 75' AGL/136' MSL. Rwy 29: Tree, 401' from DER, 579' right of centerline, 34' AGL/55' MSL. Obstruction Lighting Windsock 81' from DER, 415' right of centerline, 17' AGL/38' MSL. Bush 157' from DER, 505' right of centerline, 13' AGL/34' MSL. Bush 168' from DER, 457' right of centerline, 10' AGL/31' MSL.

WARNING: High Terrain all Quadrants
Mount Edgecumbe 3201' 13 NM
SW of Sitka.

TAKE-OFF MINIMUMS:

Runway 11, Standard with the following minimum climb requirements: 180 knots or less, 390' per NM to 1600; more than 180 knots, 640' per NM to 3400, or 3800-3 for climb in visual conditions.
Runway 29, Standard with minimum climb of 221' per NM to 900, or 3800-3 for climb in visual conditions.



NOTE: Chart not to scale.

DEPARTURE ROUTE DESCRIPTION

TAKE-OFF RUNWAY 11: Climbing right turn heading 220° to intercept BKA R-350 to BKA VORTAC or SIT NDB 175° course to SIT NDB, or for climb in visual conditions: cross Sitka Rocky Gutierrez Airport at or above 3700 then proceed direct BKA VORTAC or SIT NDB. Thence....

TAKE-OFF RUNWAY 29: Climbing left turn, direct BKA VORTAC or SIT NDB, or for climb in visual conditions: cross Sitka Rocky Gutierrez Airport at or above 3700 then proceed direct BKA VORTAC or SIT NDB. Thence....

....Climb in BKA holding pattern (hold south, left turn 001° inbound) or SIT holding pattern (hold south, left turn 003° inbound) to MEA for route of flight.