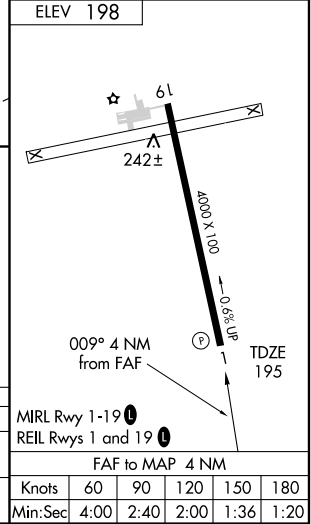
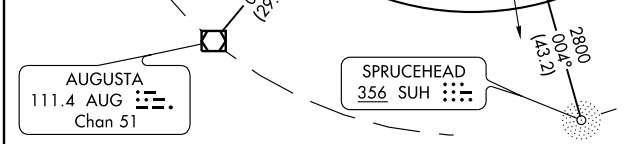
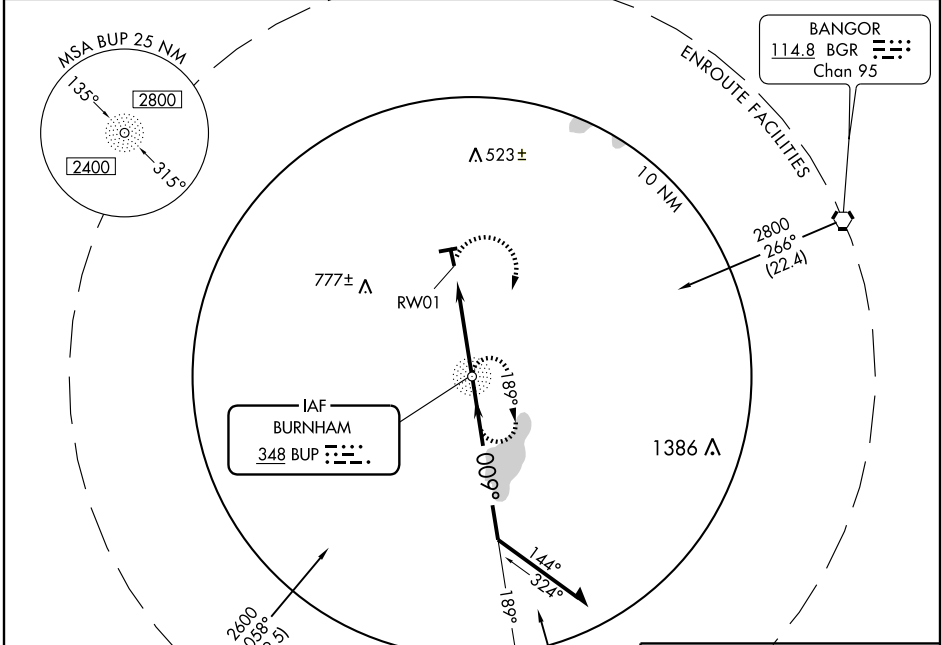


NDB or GPS RWY 1

PITTSFIELD MUNI (2B7)

NDB BUP	APP CRS	Rwy Idg	4000
348	009°	TDZE	195
		Apt Elev	198

<p>▼ Use Bangor altimeter setting.</p> <p>▲ NA</p>	<p>MISSED APPROACH: Climbing right turn to 2600 direct BUP NDB and hold.</p>
<p>BANGOR APP CON</p> <p>118.925 239.3</p>	<p>UNICOM</p> <p>122.8 (CTAF) 0</p>



2600	BUP	NDB	Remain within 10 NM
348	348	189°	2600
		009°	
		1400	
		4 NM	

CATEGORY	A	B	C	D
S-1	780-1	585 (600-1)	780-1½ 585 (600-1½)	NA
CIRCLING	840-1	642 (700-1)	840-1¾ 642 (700-1¾)	NA

Knots	60	90	120	150	180
Min:Sec	4:00	2:40	2:00	1:36	1:20

NDB or GPS RWY 1

NE-1, 22 OCT 2009 to 19 NOV 2009

NE-1, 22 OCT 2009 to 19 NOV 2009