

PITTSFIELD, MAINE

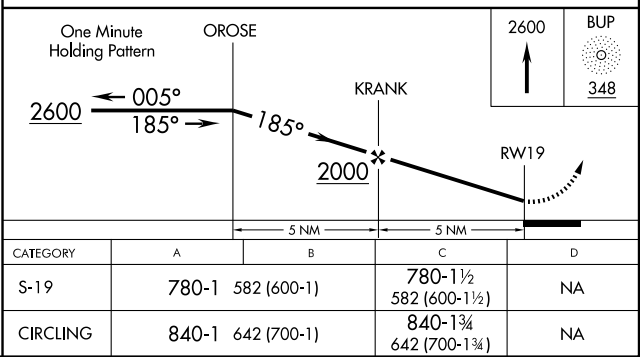
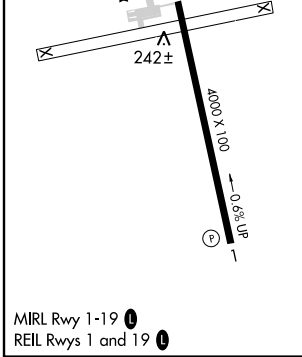
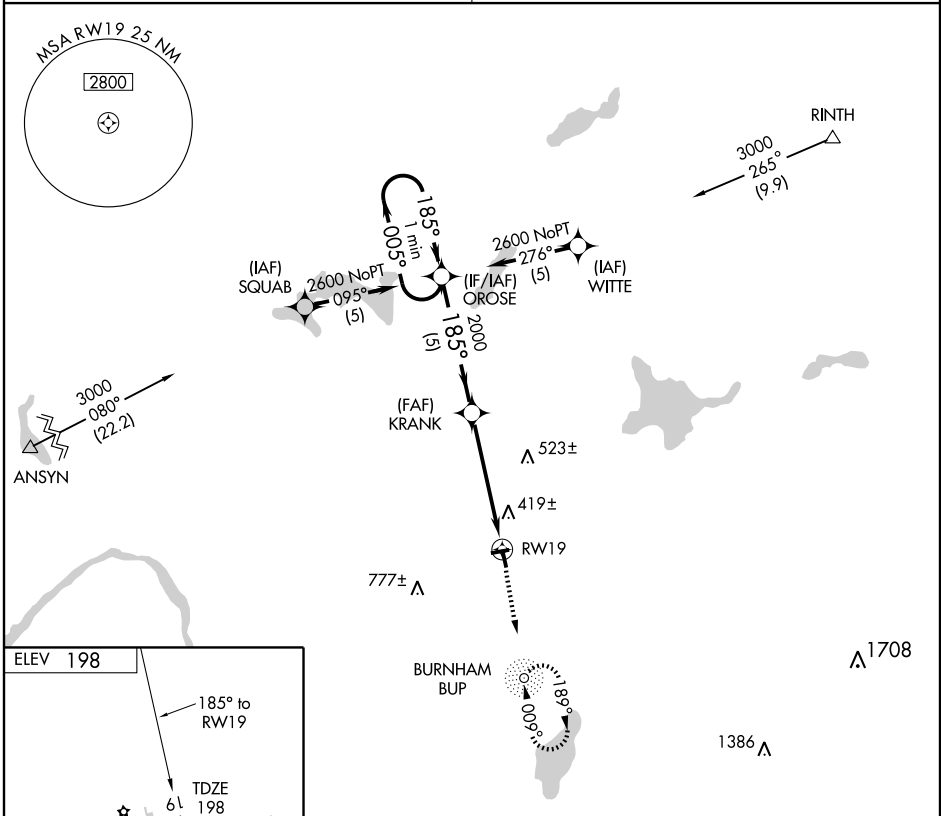
AL-5413 (FAA)

# GPS RWY 19

PITTSFIELD MUNI (2B7)

APP CRS	Rwy Idg	<b>4000</b>
<b>185°</b>	TDZE	<b>198</b>
	Apt Elev	<b>198</b>

<p><b>▼</b> Use Bangor altimeter setting.</p> <p><b>▲</b> NA</p>	<p>MISSED APPROACH: Climb to 2600 direct BUP NDB and hold.</p>
<p>BANGOR APP CON</p> <p><b>118.925 239.3</b></p>	<p>UNICOM</p> <p><b>122.8</b> (CTAF) <b>0</b></p>



NE-1, 22 OCT 2009 to 19 NOV 2009

NE-1, 22 OCT 2009 to 19 NOV 2009

PITTSFIELD, MAINE  
Orig 07298

44°46'N - 69°22'W

# GPS RWY 19