

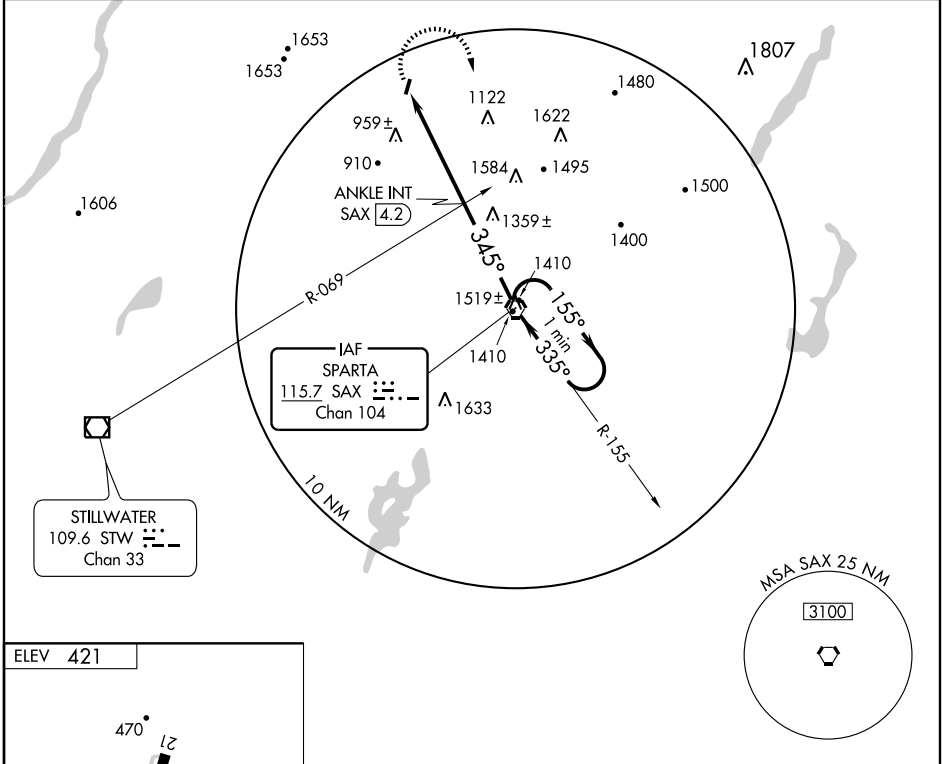
VOR-A  
SUSSEX (F'WN)

VORTAC SAX <b>115.7</b> Chan <b>104</b>	APP CRS <b>345°</b>	Rwy Idg TDZE Apt Elev	<b>N/A</b> <b>N/A</b> <b>421</b>
---	------------------------	-----------------------------	--

When local altimeter setting not received, use Teterboro altimeter setting and increase all MDA 140 feet and ANKLE FIX Minimums Cats A & B visibilities ½ mile and Cat C ½ mile.

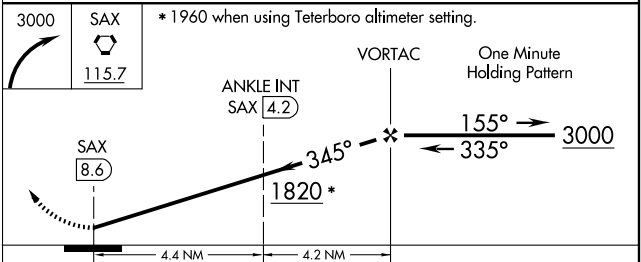
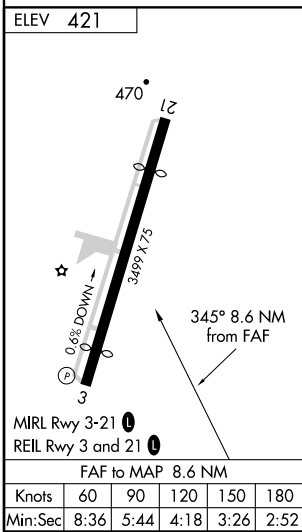
MISSED APPROACH: Climbing right turn to 3000 direct SAX VORTAC and hold.

ASOS <b>118.525</b>	NEW YORK APP CON <b>127.6 379.9</b>	UNICOM <b>122.7 (CTAF)</b>	GCO <b>121.725</b>
------------------------	--	-------------------------------	-----------------------



NE-2, 22 OCT 2009 to 19 NOV 2009

NE-2, 22 OCT 2009 to 19 NOV 2009



CATEGORY	A	B	C	D
CIRCLING	1820-1¼ 1399 (1400-1¼)	1820-1½ 1399 (1400-1½)	1820-3 1399 (1400-3)	NA
ANKLE FIX MINIMUMS (DUAL VOR RECEIVERS OR DME REQUIRED)				
CIRCLING	1300-1 879 (900-1)	1300-1¼ 879 (900-1¼)	1300-2½ 879 (900-2½)	NA