

RNAV (GPS) RWY 2

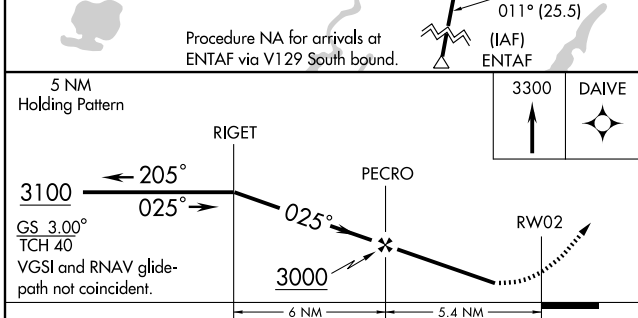
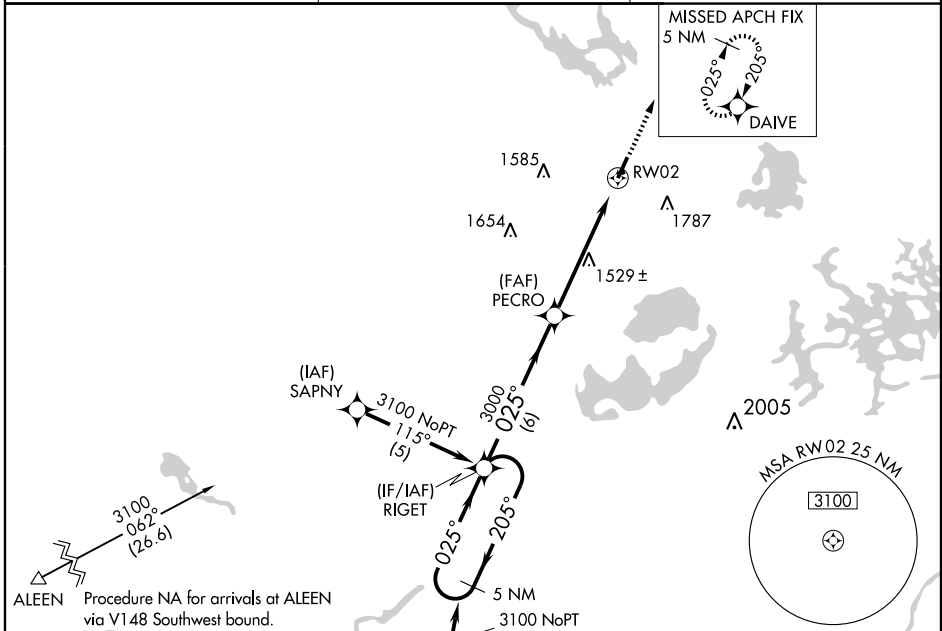
HAYWARD/SAWYER COUNTY (HYR)

WAAS CH 90400 W02A	APP CRS 025°	Rwy Idg TDZE Apt Elev	5003 1214 1216
--	------------------------	-----------------------------	---

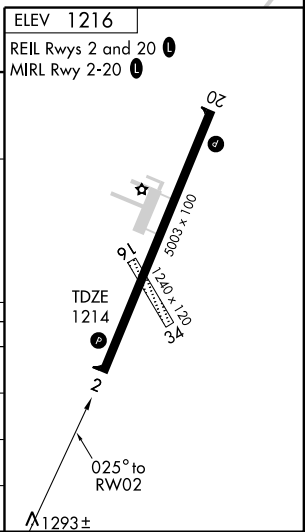
Baro-VNAV NA when using John F. Kennedy Memorial altimeter setting. DME/DME RNP-0.3 NA.
 If local altimeter setting not received, use John F. Kennedy Memorial altimeter setting and increase all DAs/MDAs 160 feet. Visibility reduction by helicopters NA.
 For uncompensated Baro-VNAV systems, LNAV/VNAV NA below -17°C (2°F) or above 46°C (116°F).

MISSED APPROACH:
 Climb to 3300 direct DAIVE and hold.

ASOS 113.4	MINNEAPOLIS CENTER 126.45 276.4	UNICOM 122.8 (CTAF)
----------------------	---	-------------------------------



CATEGORY	A	B	C	D
LPV DA	1514-1		300 (300-1)	
LNAV/VNAV DA	1558-1¼		344 (400-1¼)	
LNAV MDA	1780-1	566 (600-1)	1780-1½ 566 (600-1½)	1780-1¾ 566 (600-1¾)
CIRCLING	1880-1¼	664 (700-1¼)	2000-2¼ 784 (800-2¼)	2120-3 904 (1000-3)



EC-3, 22 OCT 2009 to 19 NOV 2009

EC-3, 22 OCT 2009 to 19 NOV 2009