

STURGEON BAY, WISCONSIN

AL-5409 (FAA)

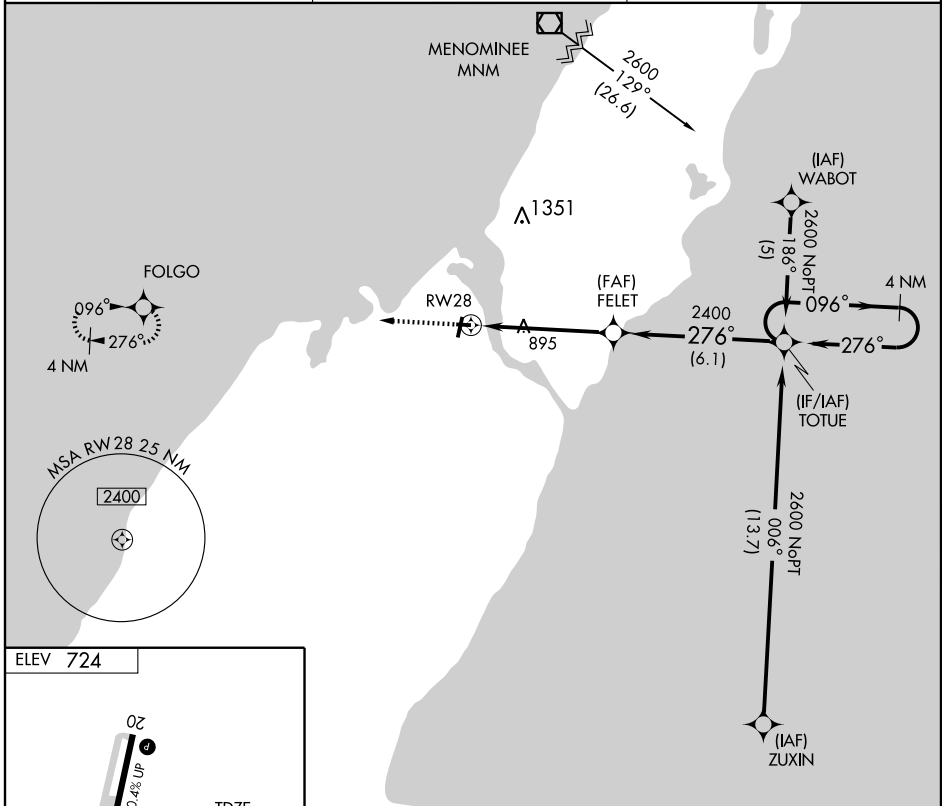
APP CRS <b>276°</b>	Rwy Idg <b>3199</b>
	TDZE <b>720</b>
	Apt Elev <b>724</b>

# RNAV (GPS) RWY 28

STURGEON BAY/DOOR COUNTY CHERRYLAND (SUE)

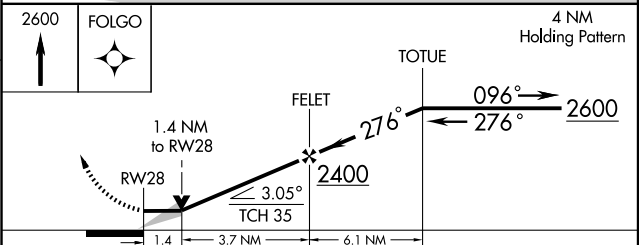
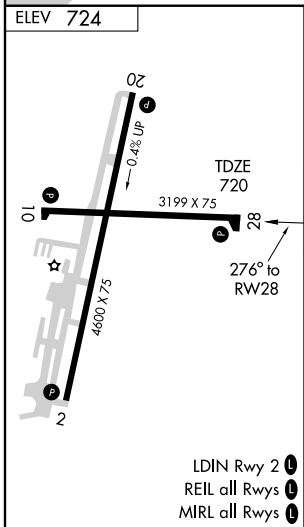
<b>▼</b> DME/DME RNP -0.3 NA.	MISSED APPROACH: Climb to 2600 direct FOLGO and hold.
-------------------------------	---

AWOS-3 <b>128.325</b>	GREEN BAY APP CON ★ <b>119.25 338.2</b>	UNICOM <b>122.7 (CTAF)</b> <b>0</b>
--------------------------	--	--



EC-3, 22 OCT 2009 to 19 NOV 2009

EC-3, 22 OCT 2009 to 19 NOV 2009



CATEGORY	A	B	C	D
LNAV MDA	1200-1	480 (500-1)	1200-1¼ 480 (500-1¼)	NA
CIRCLING	1200-1	476 (500-1)	1200-1½ 476 (500-1½)	NA

STURGEON BAY, WISCONSIN  
Orig 07242

STURGEON BAY/DOOR COUNTY CHERRYLAND (SUE)  
44° 51' N-87° 25' W  
**RNAV (GPS) RWY 28**