

STURGEON BAY, WISCONSIN

AL-5409 (FAA)

# RNAV (GPS) RWY 20

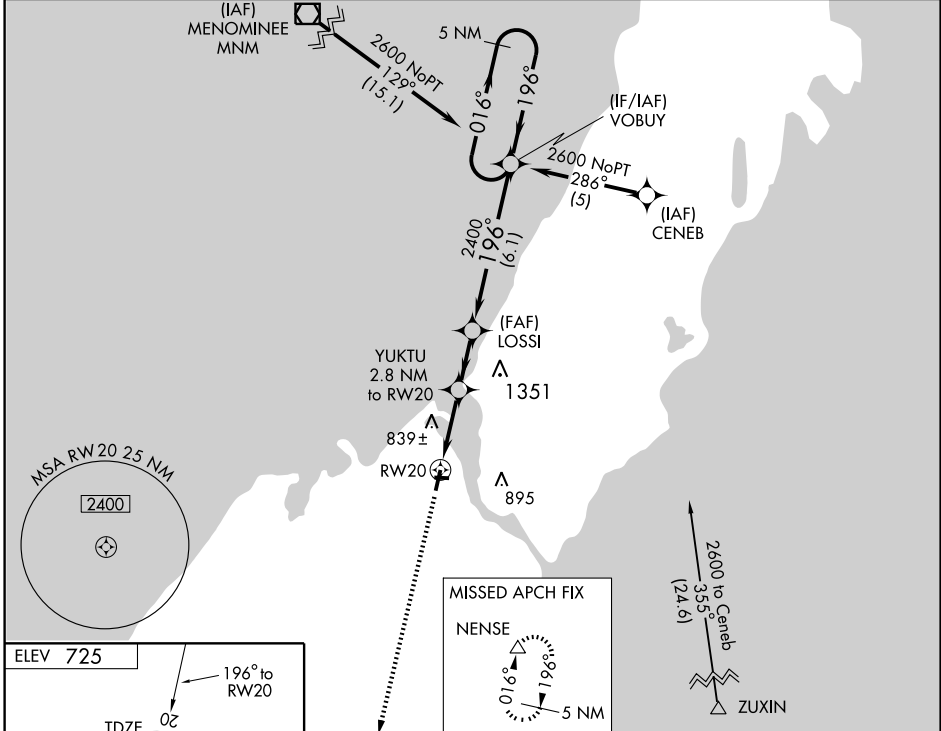
STURGEON/DOOR COUNTY CHERRYLAND (SUE)

WAAS CH <b>86304</b> <b>W20A</b>	APP CRS <b>196°</b>	Rwy Idg TDZE <b>724</b> Apt Elev <b>725</b>	<b>4600</b>
--	------------------------	---	-------------

**⚠** For uncompensated Baro-VNAV systems, LNAV/VNAV NA below -16°C (4°F) or above 47°C (116°F).  
**⚠** DME/DME RNP-0.3 NA. If local altimeter setting not received, use Menominee-Marinette Twin County altimeter setting and increase all DAs/MDAs 60 feet. VDP and Baro-VNAV NA when using Menominee-Marinette Twin County altimeter setting.

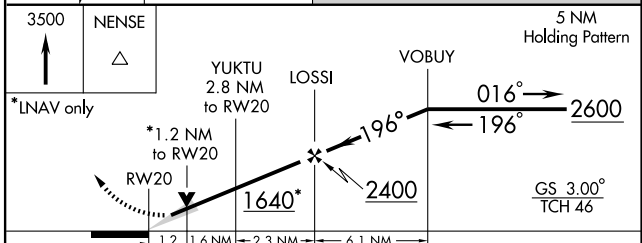
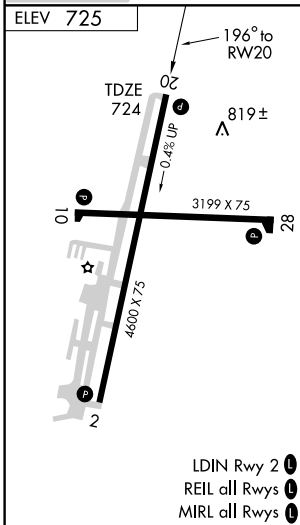
**MISSED APPROACH:**  
Climb to 3500 direct NENSE and hold.

AWOS-3 <b>128.325</b>	GREEN BAY APP CON ★ <b>119.25 338.2</b>	UNICOM <b>122.7</b> (CTAF) <b>0</b>
--------------------------	--	--



EC-3, 22 OCT 2009 to 19 NOV 2009

EC-3, 22 OCT 2009 to 19 NOV 2009



CATEGORY	A	B	C	D
LPV DA	974-1		250 (300-1)	
LNAV/VNAV DA	1069-1¼		345 (400-1¼)	
LNAV MDA	1120-1		396 (400-1)	
CIRCLING	1160-1	1180-1	1180-1½	1280-2
	435 (500-1)	455 (500-1)	455 (500-1½)	555 (600-2)

STURGEON BAY, WISCONSIN  
Amdt 1 07270

STURGEON/DOOR COUNTY CHERRYLAND (SUE)  
44° 51' N-87° 25' W  
**RNAV (GPS) RWY 20**

LDIN Rwy 2 **0**  
REIL all Rwys **0**  
MIRL all Rwys **0**