

WEBSTER CITY, IOWA

AL-5407 (FAA)

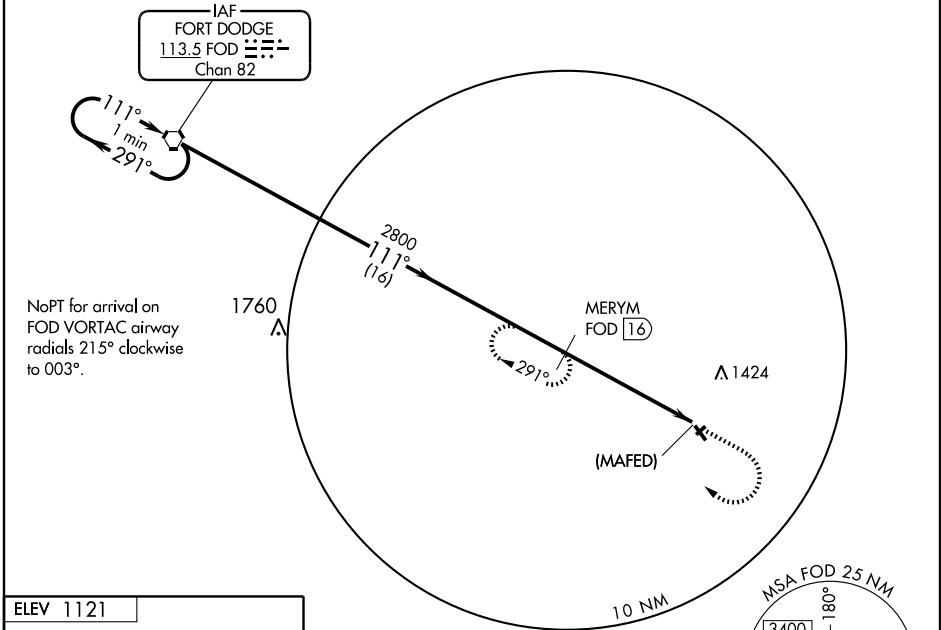
VOR/DME or GPS RWY 14

WEBSTER CITY MUNI (EBS)

VORTAC FOD 113.5 Chan 82	APP CRS 111°	Rwy Idg TDZE 1116 Apt Elev 1121	4007
--	------------------------	---	-------------

MISSED APPROACH: Climb to 2800, then right turn via FOD R-111 to MERYM/16 DME and hold.

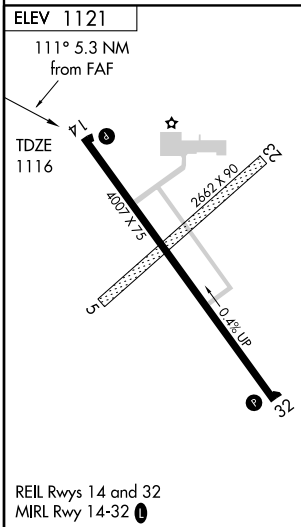
AWOS-3 127.825	MINNEAPOLIS CENTER 134.0 288.3	UNICOM 122.8 (CTAF) 0
--------------------------	--	--



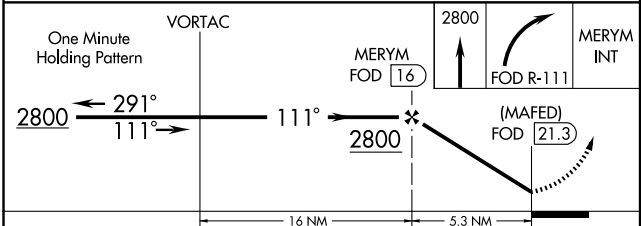
NoPT for arrival on FOD VORTAC airway radials 215° clockwise to 003°.

NC-3, 22 OCT 2009 to 19 NOV 2009

NC-3, 22 OCT 2009 to 19 NOV 2009



REIL Rws 14 and 32
MRL Rwy 14-32 **0**



CATEGORY	A	B	C	D
S-14	1640-1 524 (600-1)	1640-1¼ 524 (600-1¼)	1640-1½ 524 (600-1½)	NA
CIRCLING	1640-1 519 (600-1)	1640-1¼ 519 (600-1¼)	1640-1½ 519 (600-1½)	NA

WEBSTER CITY, IOWA
Amdt 4 09071

42°26'N - 93°52'W

VOR/DME or GPS RWY 14

WEBSTER CITY MUNI (EBS)