

GPS RWY 32

WEBSTER CITY MUNI (EBS)

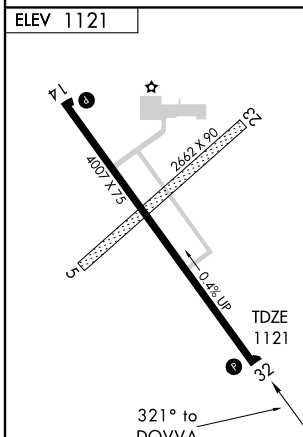
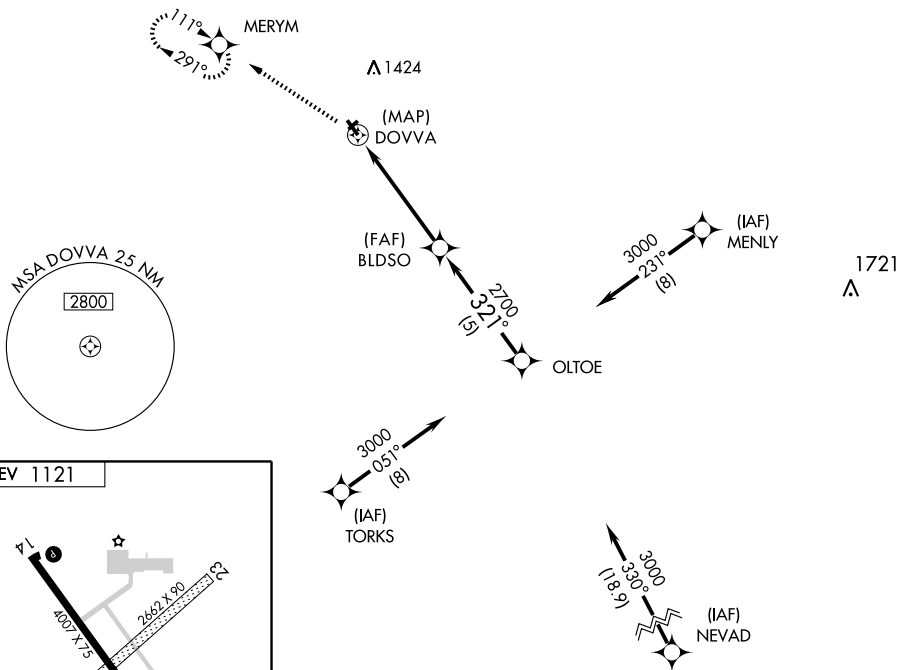
APP CRS 321°	Rwy Idg 4007
	TDZE 1121
	Apt Elev 1121

MISSED APPROACH: Climb to 2800 direct to MERYM WP and hold.

▲ NA	AWOS-3 127.825	MINNEAPOLIS CENTER 134.0 288.3	UNICOM 122.8 (CTAF) 0
-------------	--------------------------	--	---------------------------------

NC-3, 22 OCT 2009 to 19 NOV 2009

NC-3, 22 OCT 2009 to 19 NOV 2009



REIL Rwy 14 and 32
MIRL Rwy 14-32 0

2800	MERYM	OLTOE	3000
↑	✧		Procedure Turn NA
DOVVA	BLDZO		
321°	2700	321°	
5 NM		5 NM	
CATEGORY	A	B	C
S-32	1480-1 359 (400-1)		
CIRCLING	1540-1 419 (500-1)	1580-1 459 (500-1)	1580-1½ 459 (500-1½)
	D		
	NA		