

# RNAV (GPS) RWY 5

MOUNTAIN HOME/ OZARK RGNL (BPK)

WAAS Ch <b>69300</b> <b>W05A</b>	APP CRS <b>049°</b>	Rwy Idg <b>5001</b> TDZE <b>928</b> Apt Elev <b>928</b>
--	------------------------	---

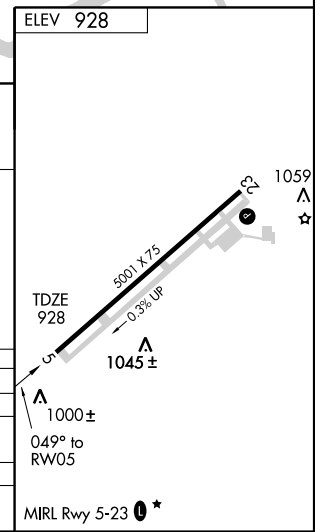
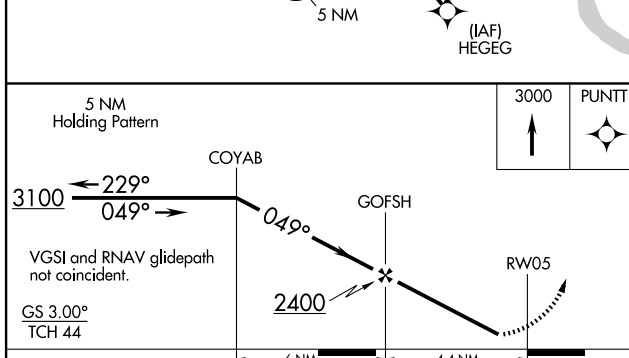
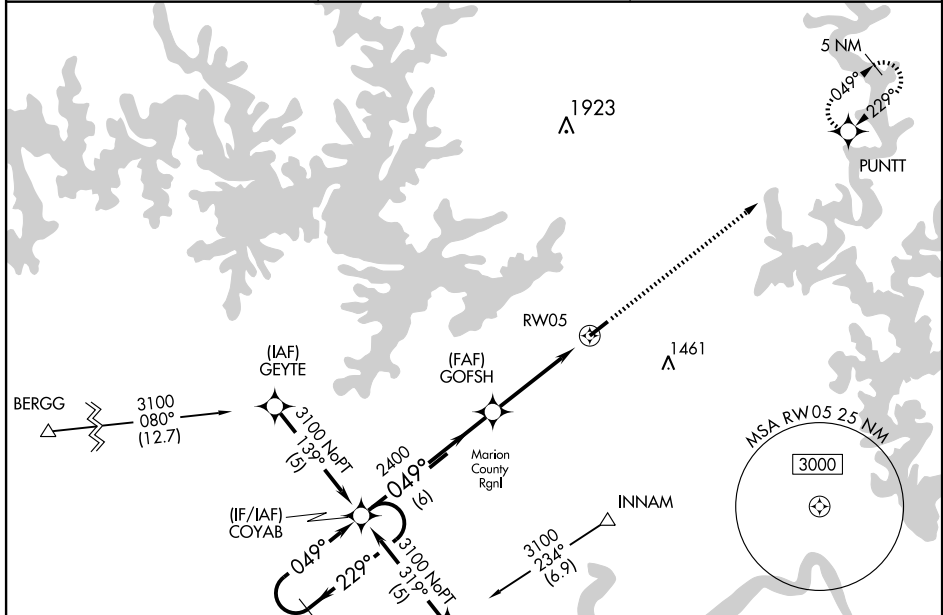
**⚠** DME/DME RNP-0.3 NA. Visibility reduction by helicopters NA.  
 For uncompensated BARO-VNAV systems, LNAV/VNAV NA below -16°C (4°F)  
 or above 95°C (203°F). If local altimeter setting not received, use Flippin  
 altimeter setting and increase all DAs/MDAs 60 feet. BARO-VNAV NA when  
 using Flippin altimeter setting.

**MISSED APPROACH:** Climb to 3000  
 direct PUNTT and hold.

ASOS  
**133.975**

MEMPHIS CENTER  
**126.85 281.55**

UNICOM  
**123.0 (CTAF) 0\***



CATEGORY	A	B	C	D
LPV DA	1201-1	273 (300-1)		NA
LNAV/DA VNAV	1250-1¼	322 (400-1¼)		NA
LNAV MDA	1280-1	352 (400-1)		NA
CIRCLING	1400-1¼	472 (500-1¼)	1400-1½ 472 (500-1½)	NA

MIRL Rwy 5-23 0\*

SC-1, 22 OCT 2009 to 19 NOV 2009

SC-1, 22 OCT 2009 to 19 NOV 2009