

LOC/DME I-BPK 111.95 Chan 56(Y)	APP CRS 049°	Rwy Idg 5001 TDZE 928 Apt Elev 928
---	------------------------	---

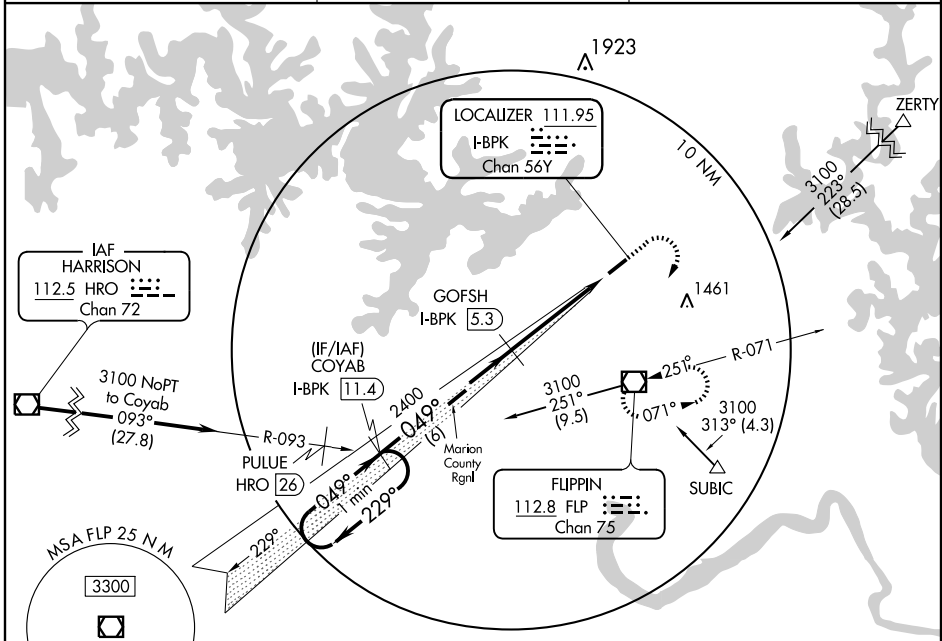
ILS or LOC/DME RWY 5

MOUNTAIN HOME/ OZARK RGNL (BPK)

⚠ If local altimeter setting not received, use Flippin altimeter setting and increase DA to 1225 feet and all MDAs 60 feet. Visibility reduction by helicopters NA.

⚠ MISSED APPROACH: Climb to 1800 then climbing right turn to 3100 direct FLP VOR/DME and hold.

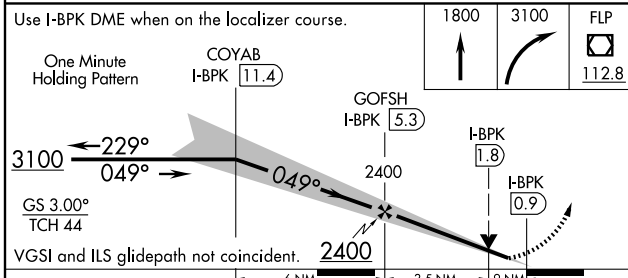
ASOS 133.975	MEMPHIS CENTER 126.85 281.55	UNICOM 123.0 (CTAF) 0 *
------------------------	--	-----------------------------------



SC-1, 22 OCT 2009 to 19 NOV 2009

SC-1, 22 OCT 2009 to 19 NOV 2009

DME REQUIRED



ELEV 928	MIRL Rwy 5-23 0 *												
<table border="1"> <tr> <td>Knots</td> <td>60</td> <td>90</td> <td>120</td> <td>150</td> <td>180</td> </tr> <tr> <td>Min:Sec</td> <td></td> <td></td> <td></td> <td></td> <td></td> </tr> </table>		Knots	60	90	120	150	180	Min:Sec					
Knots	60	90	120	150	180								
Min:Sec													

CATEGORY	A	B	C	D
S-ILS 5	1178-3/4	250 (300-3/4)		NA
S-LOC 5	1260-1	332 (400-1)		NA
CIRCLING	1400-1	472 (500-1)	1400-1 1/2 472 (500-1 1/2)	NA