

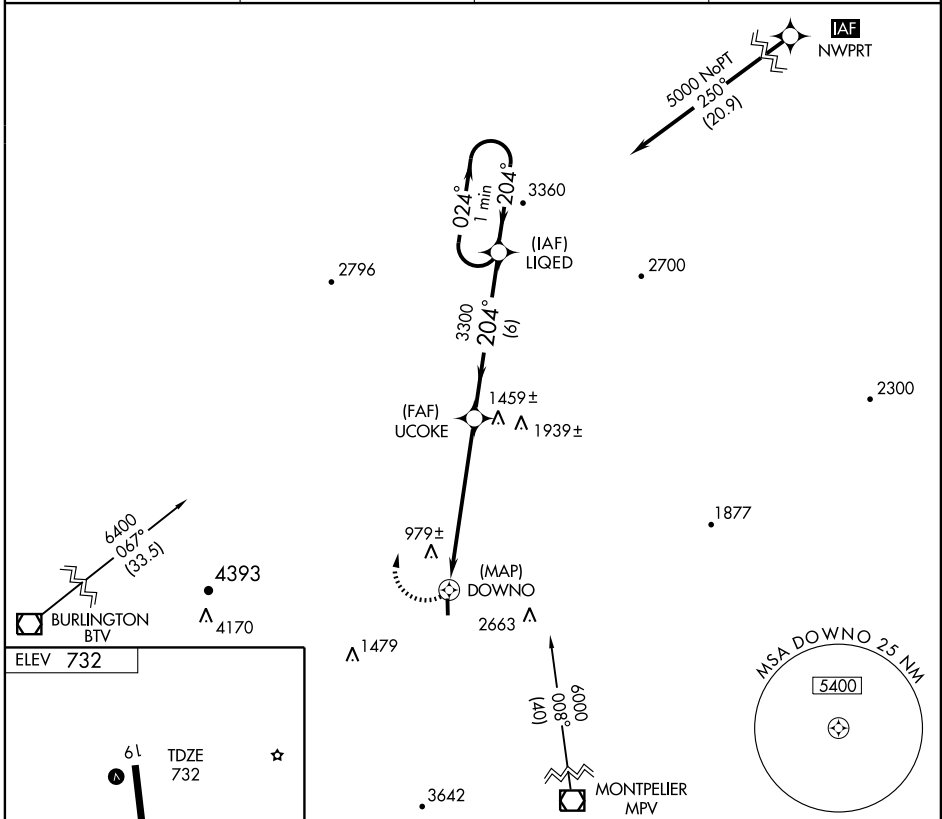
GPS RWY 19

MORRISVILLE-STOWE STATE (MVL)

APP CRS 204°	Rwy Idg 3701
	TDZE 732
	Apt Elev 732

IAF ARM APPROACH MODE PRIOR TO IAF.	MISSED APPROACH: Climbing right turn to 5000 direct LIQED WP and hold.
NA When local altimeter setting not received, procedure not authorized.	

ASOS 135.625	BOSTON CENTER 135.7 282.2	GCO 135.075	UNICOM 122.8 (CTAF)
------------------------	-------------------------------------	-----------------------	-------------------------------



NE-1, 22 OCT 2009 to 19 NOV 2009

NE-1, 22 OCT 2009 to 19 NOV 2009

ELEV 732

TDZE 732

3701 X 75

0.3% UP

MIRL Rwy 1-19

REL Rwys 1 and 19

5000	LIQED	UCOKE	LIQED	One Minute Holding Pattern
DOWNNO		3300	5000	
.3		6.2 NM	6 NM	
CATEGORY	A	B	C	D
S-19	1560-1 828 (900-1)	1560-1¼ 828 (900-1¼)	NA	
CIRCLING	1600-1 868 (900-1)	1600-1¼ 868 (900-1¼)	NA	