

RNAV (GPS) RWY 35

PASCAGOULA/TRENT LOTT INTL (PQL)

WAAS CH 72904 W35A	APP CRS 345°	Rwy Idg TDZE 17 Apt Elev 17	6500
--	------------------------	---	-------------

⚠ BARO-VNAV NA when using Mobile Rgnl, AL altimeter setting. For uncompensated BARO-VNAV systems, LNAV/VNAV NA below -15°C (5°F) or above 48°C (118°F).
⚠ DME/DME RNP-0.3 NA. Visibility reduction by helicopters NA. If local altimeter setting not received, use Mobile Rgnl, AL altimeter setting and increase LPV DA to 398, LNAV/VNAV DA to 673, and all MDAs 80 feet. VDP NA when using Mobile Rgnl altimeter setting.

MISSED APPROACH: Climb to 1700 direct BEZJU and hold.

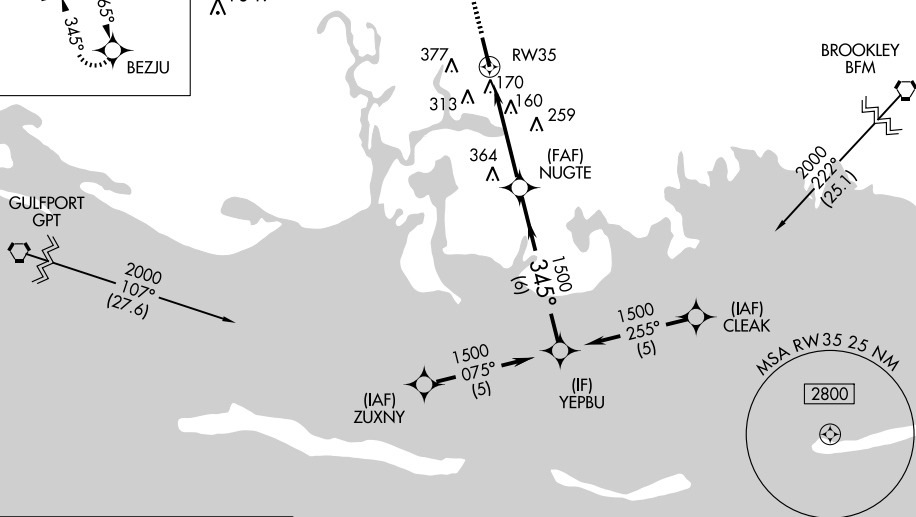
ATIS 135.175	MOBILE APP CON* 121.0 307.1	TRENT LOTT TOWER* 118.575 (CTAF) 0	GND CON 121.725	CLNC DEL 121.725	UNICOM 122.8
------------------------	---------------------------------------	---	---------------------------	----------------------------	------------------------

MISSED APCH FIX



△ 1049

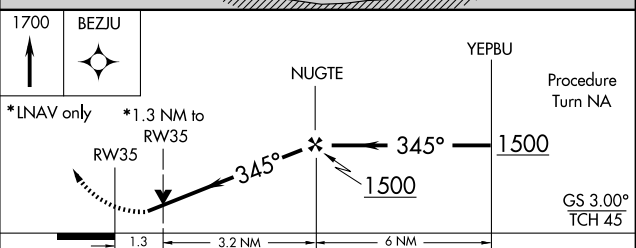
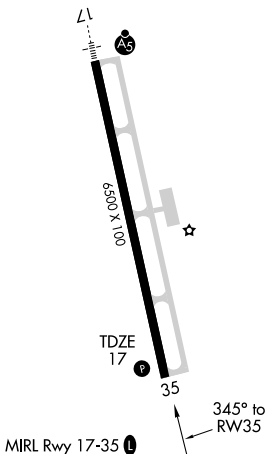
Procedure NA for arrivals at GPT VORTAC via V20 southwest bound, and arrivals at BFM VORTAC via V198 northeast bound.



SC-4, 22 OCT 2009 to 19 NOV 2009

SC-4, 22 OCT 2009 to 19 NOV 2009

ELEV 17



CATEGORY	A	B	C	D
LPV DA		323-1	306 (400-1)	
LNAV/VNAV DA		598-2	581 (600-2)	
LNAV MDA	480-1	463 (500-1)	480-1½ 463 (500-1½)	480-1½ 463 (500-1½)
CIRCLING	480-1 463 (500-1)	680-1 663 (700-1)	680-1¾ 663 (700-1¾)	680-2 663 (700-2)

RNAV (GPS) RWY 35