


# RNAV (GPS) RWY 17

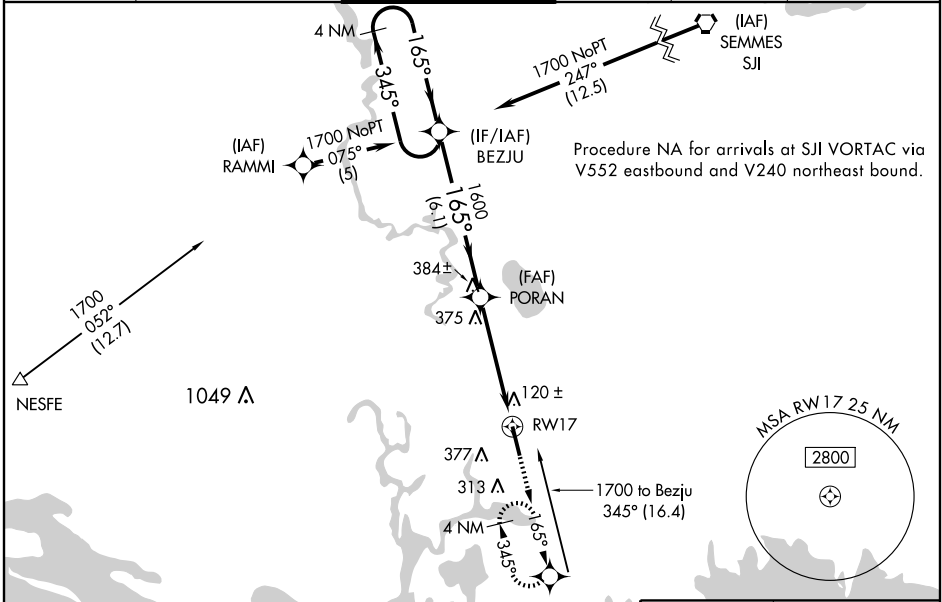
PASCAGOULA/TRENT LOTT INTL (PQL)

WAAS CH <b>58204</b> <b>W17A</b>	APP CRS <b>165°</b>	Rwy Idg <b>6500</b> TDZE <b>17</b> Apt Elev <b>17</b>
--	------------------------	---

**⚠** BARO-VNAV NA when using Mobile Rgnl, AL altimeter setting. For uncompensated BARO-VNAV systems, LNAV/VNAV NA below -15°C (5°F) or above 48°C (118°F).  
**⚠** DME/DME RNP-0.3 NA. If local altimeter setting not received, use Mobile Rgnl, AL altimeter setting and increase LPV DA to 292, LNAV/VNAV DA to 511, and all MDAs 80 feet. VDP NA when using Mobile Rgnl, AL altimeter setting.

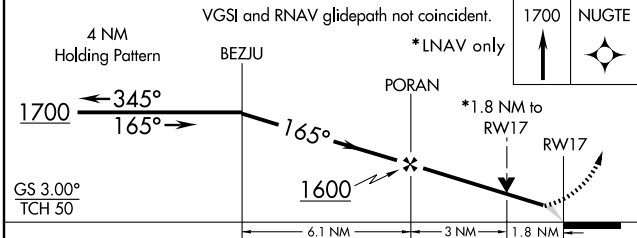
**MALSR**  
 MISSED APPROACH:  
 Climb to 1700 direct NUGTE and hold.

ATIS <b>135.175</b>	MOBILE APP CON* <b>121.0 307.1</b>	TRENT LOTT TOWER* <b>118.575 (CTAF)</b> 	GND CON <b>121.725</b>	CLNC DEL <b>121.725</b>	UNICOM <b>122.8</b>
------------------------	---------------------------------------	--	---------------------------	----------------------------	------------------------



SC-4, 22 OCT 2009 to 19 NOV 2009

SC-4, 22 OCT 2009 to 19 NOV 2009



CATEGORY	A	B	C	D
LPV DA		217-½	200 (200-½)	
LNAV/VNAV DA		436-1	419 (500-1)	
LNAV MDA	640-½	623 (700-½)	640-1¼ 623 (700-1¼)	640-1½ 623 (700-1½)
CIRCLING	640-1 623 (700-1)	680-1 663 (700-1)	680-1¾ 663 (700-1¾)	680-2 663 (700-2)

