

SAN DIEGO, CALIFORNIA

AL-5401 (FAA)

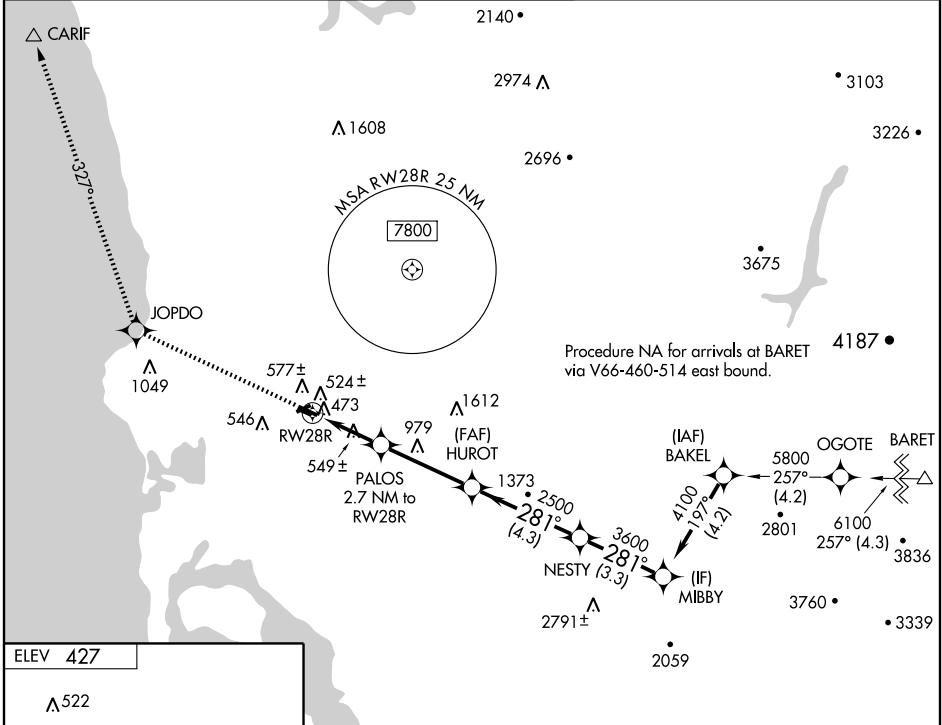
WAAS CH <b>45710</b> <b>W28A</b>	APP CRS <b>281°</b>	Rwy Idg TDZE <b>423</b> Apt Elev <b>427</b>	<b>3401</b>
--	------------------------	---	-------------

# RNAV (GPS) RWY 28R

SAN DIEGO/MONTGOMERY FIELD (MYF)

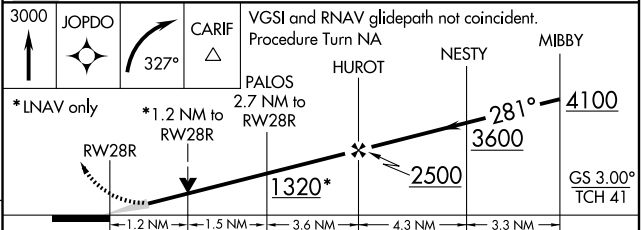
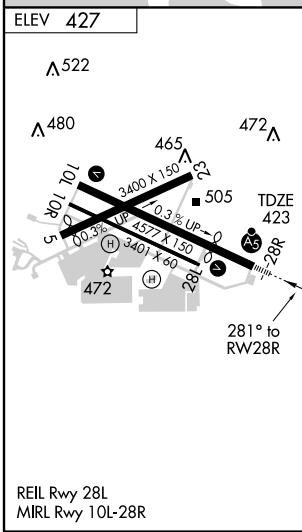
<p>▼ For uncompensated Baro-VNAV systems, LNAV/VNAV NA below -15°C (5°F) or above 54°C (130°F). DME/DME RNP-0.3 NA.</p>	<p>MALSR</p>	<p>MISSED APPROACH: Climb to 3000 direct JOPDO and right turn via 327° track to CARIF.</p>
---	--------------	--

ATIS <b>126.9</b>	SOCAL APP CON <b>124.35 279.625</b>	MONTGOMERY TOWER* <b>119.2 (CTAF) 0 269.4</b>	GND CON <b>118.22</b>	CLNC DEL <b>123.725</b>	SAN DIEGO RADIO <b>122.4</b>
----------------------	--	--	--------------------------	----------------------------	---------------------------------



SW-3, 22 OCT 2009 to 19 NOV 2009

SW-3, 22 OCT 2009 to 19 NOV 2009



CATEGORY	A	B	C	D
LPV DA	623-1/2	200 (200-1/2)		NA
LNAV/VNAV DA	750-3/4	327 (400-3/4)		NA
LNAV MDA	840-1/2	417 (500-1/2)		NA
CIRCLING	880-1	453 (500-1)		NA

SAN DIEGO, CALIFORNIA  
Orig 09183

32°49'N-117°08'W

# RNAV (GPS) RWY 28R