

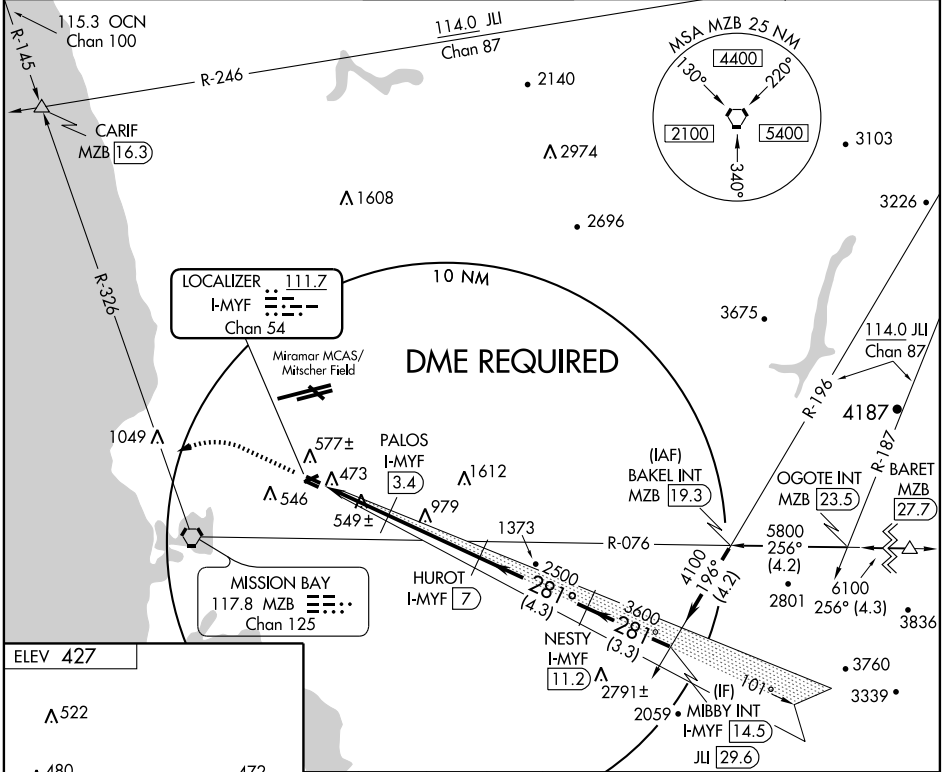
ILS or LOC/DME RWY 28R

SAN DIEGO/ MONTGOMERY FIELD (MYF)

LOC/DME I-MYF 111.7 Chan 54	APP CRS 281°	Rwy Idg TDZE Apt Elev	3401 423 427
--	------------------------	-----------------------------	---

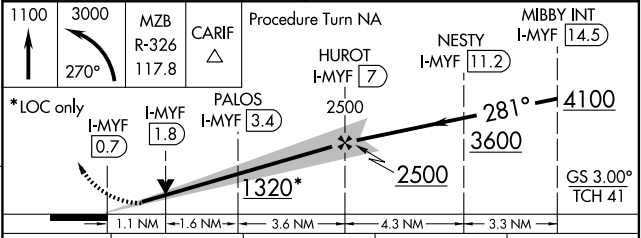
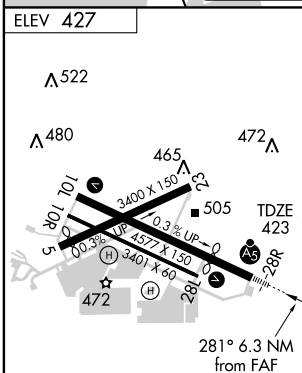
	MALSR 	MISSED APPROACH: Climb to 1100 then climbing left turn to 3000 via heading 270° and MZB R-326 to CARIF INT.
--	-----------	---

ATIS 126.9	SOCAL APP CON 124.35 279.625	MONTGOMERY TOWER* 119.2 (CTAF) 269.4	GND CON 118.22	CLNC DEL 123.725	SAN DIEGO RADIO 122.4
----------------------	--	--	--------------------------	----------------------------	---------------------------------



SW-3, 22 OCT 2009 to 19 NOV 2009

SW-3, 22 OCT 2009 to 19 NOV 2009



CATEGORY	A	B	C	D
S-ILS 28R	623-½	200 (200-½)		NA
S-LOC 28R	800-½	377 (400-½)		NA
CIRCLING	880-1	453 (500-1)		NA