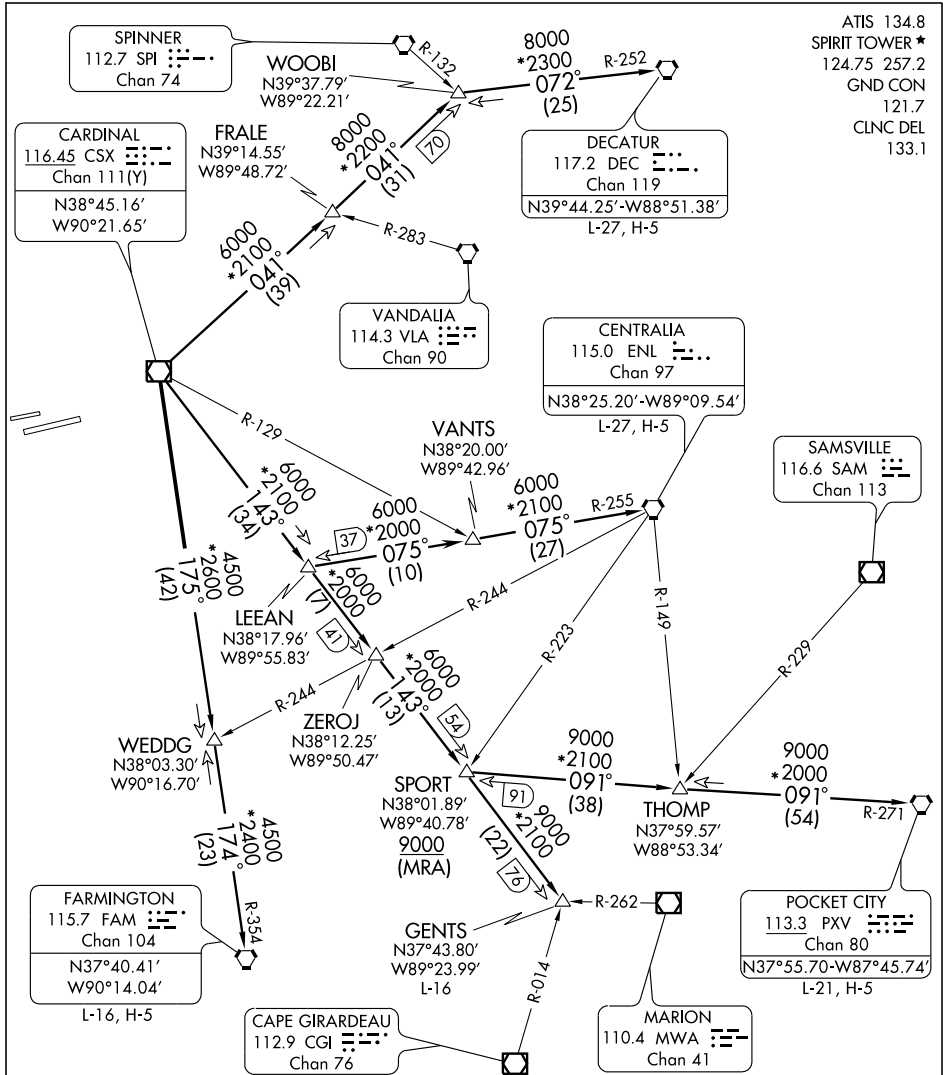


# TURBO FIVE DEPARTURE

SL-5400 (FAA)

ST. LOUIS/SPIRIT OF ST. LOUIS (SU5)

ST. LOUIS, MISSOURI



ATIS 134.8  
 SPIRIT TOWER \*  
 124.75 257.2  
 GND CON  
 121.7  
 CLNC DEL  
 133.1

NC-3, 22 OCT 2009 to 19 NOV 2009

NC-3, 22 OCT 2009 to 19 NOV 2009

### TAKE-OFF MINIMUMS

Rwy 8L, 26R: Standard.

Rwy 8R: 300-1½ or standard with minimum climb of 285' per NM to 900.

Rwy 26L: 400-1¾ or standard with minimum climb of 258' per NM to 900.

(NOTES CONTINUED ON FOLLOWING PAGE)

NOTE: For Turboprop/Prop aircraft only.

NOTE: RADAR required.

NOTE: Chart not to scale.

(NARRATIVE ON FOLLOWING PAGE)

# TURBO FIVE DEPARTURE