


WAAS CH 61114 W08B	APP CRS 076°	Rwy Idg TDZE 462 Apt Elev 463	7245
--	------------------------	---	-------------

RNAV (GPS) RWY 8R

ST. LOUIS/ SPIRIT OF ST. LOUIS (SUS)

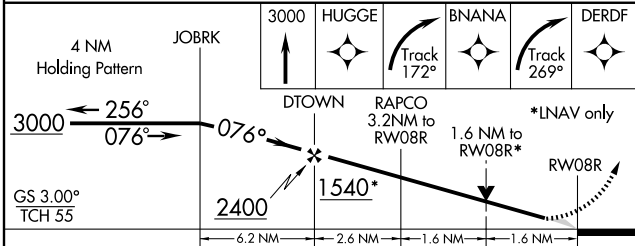
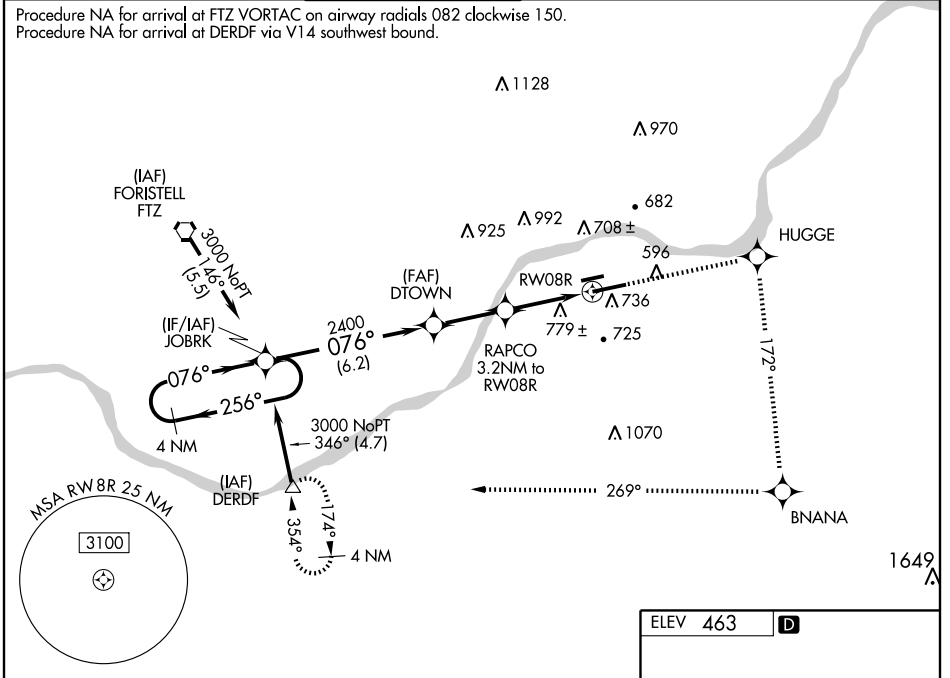
<p>▼ DME/DME RNP-0.3 NA. For uncompensated Baro-VNAV systems, LNAV/VNAV NA below -15°C (5°F) or above 48°C (118°F). Baro-VNAV and VDP NA when using Lambert-St Louis Intl altimeter setting. When local altimeter setting not received, use Lambert-St Louis Intl altimeter setting and increase all DA 57 feet all MDA 60 feet, increase visibility LNAV/VNAV all Cats, LNAV Cats C and D, and circling Cat C ¼ mile.</p>	<p>MALS  MISSED APPROACH: Climb to 3000 direct HUGGE and right turn via track 172° to BNANA and right turn via track 269° track to DERDF and hold.</p>
---	--

ATIS 134.8	ST. LOUIS APP CON 126.5 254.3	SPIRIT TOWER* 124.75 (CTAF) 257.2	GND CON 121.7	CLNC DEL 133.1	ST. LOUIS CLNC DEL 121.7 (when tower closed)
----------------------	---	---	-------------------------	--------------------------	---

Procedure NA for arrival at FTZ VORTAC on airway radials 082 clockwise 150.
 Procedure NA for arrival at DERDF via V14 southwest bound.

NC-3, 22 OCT 2009 to 19 NOV 2009

NC-3, 22 OCT 2009 to 19 NOV 2009



CATEGORY	A	B	C	D
LPV DA	662/24 200 (200-½)			
LNAV/VNAV DA	1129-1¾ 667 (700-1¾)			
LNAV MDA	1040/24 578 (600-½)	1040/50 578 (600-1)	1040/60 578 (600-1¼)	
CIRCLING	1100-1 637 (700-1)	1120-1¾ 657 (700-1¾)	1140-2¼ 677 (700-2¼)	

