

# RNAV (GPS) RWY 26R

ST. LOUIS/ SPIRIT OF ST. LOUIS (SUS)

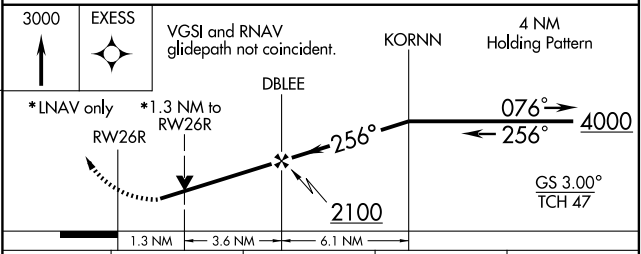
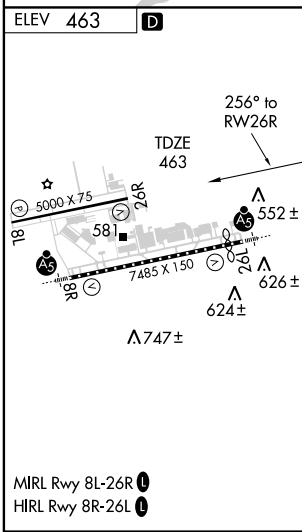
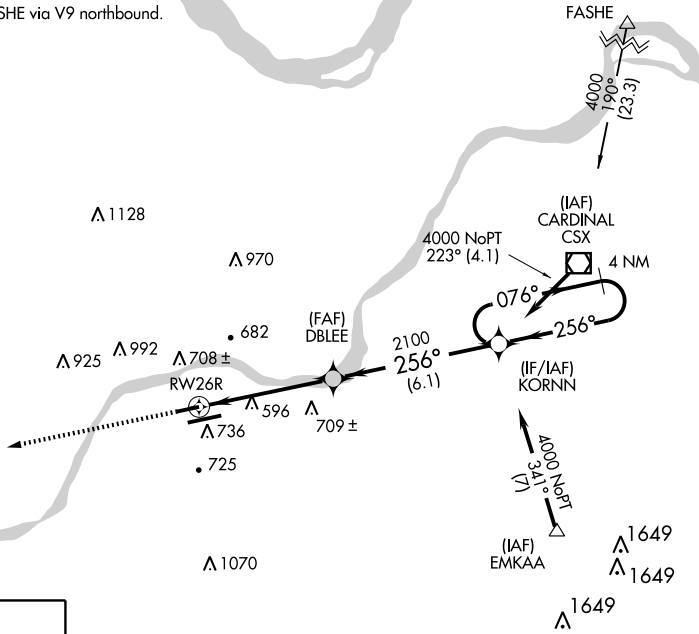
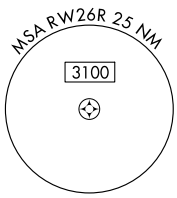
WAAS CH <b>97414</b> <b>W26A</b>	APP CRS <b>256°</b>	Rwy Idg TDZE <b>463</b> Apt Elev <b>463</b>	<b>5000</b>
----------------------------------------	------------------------	---------------------------------------------------	-------------

**⚠** For uncompensated Baro-VNAV systems, LNAV/VNAV NA below -15°C (5°F) or above 48°C (118°F). DME/DME RNP-0.3 NA. Visibility reduction by helicopters NA. VDP and Baro-VNAV NA when using Lambert-St Louis Intl altimeter setting. When local altimeter setting not received, use Lambert St Louis Intl altimeter setting and increase all DA 57 feet all MDA 60 feet, increase LPV and LNAV/VNAV all Cats visibility ¼ mile.

MISSED APPROACH: Climb to 3000 direct EXESS and hold.

ATIS <b>134.8</b>	ST. LOUIS APP CON <b>126.5 254.3</b>	SPIRIT TOWER* <b>124.75(CTAF) 0 257.2</b>	GND CON <b>121.7</b>	CLNC DEL <b>133.1</b>	ST. LOUIS CLNC DEL <b>121.7</b> (when tower closed)
----------------------	-----------------------------------------	----------------------------------------------	-------------------------	--------------------------	-----------------------------------------------------------

Procedure NA for arrivals at FASHE via V9 northbound.



CATEGORY	A	B	C	D
LPV DA	803-1¼	340 (400-1¼)		NA
LNAV/VNAV DA	953-1¾	490 (500-1¾)		NA
LNAV MDA	1000-1	537 (600-1)		NA
CIRCLING	1100-1	637 (700-1)		NA

NC-3, 22 OCT 2009 to 19 NOV 2009

NC-3, 22 OCT 2009 to 19 NOV 2009