

RNAV (GPS) RWY 26L

ST. LOUIS/ SPIRIT OF ST. LOUIS (SUS)

WAAS CH 81914 W26B	APP CRS 256°	Rwy Idg TDZE 462 Apt Elev 463	7004
--	------------------------	---	-------------

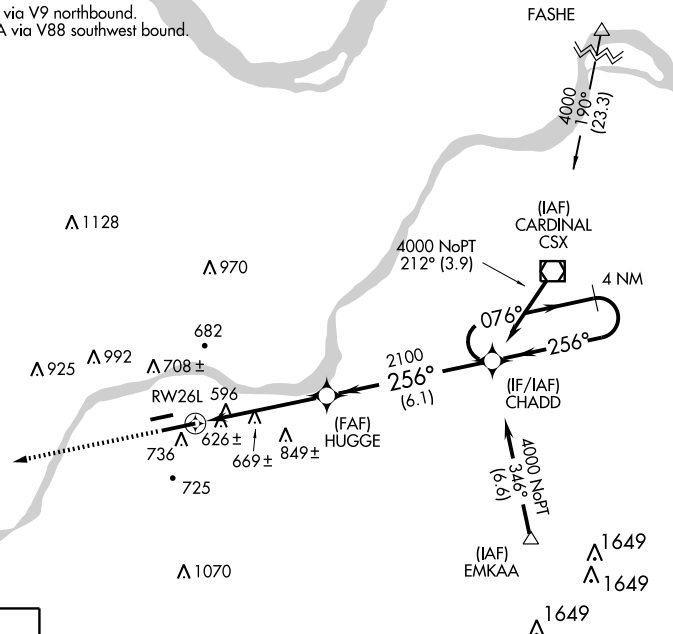
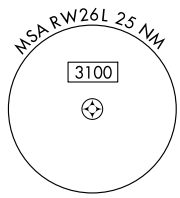
⚠ DME/DME RNP-0.3 NA. For uncompensated Baro-VNAV systems, LNAV/VNAV NA below -15°C (5°F) or above 48°C (118°F). Baro-VNAV and VDP NA when using Lambert-St Louis Intl altimeter setting. When local altimeter setting not received, use Lambert-St Louis Intl altimeter setting and increase all DA 57 feet all MDA 60 feet, LNAV/VNAV visibilities all Cats ¼ mile and circling visibility Cat C ¼ mile.



MISSED APPROACH: Climb to 3000 direct JOBRK and hold.

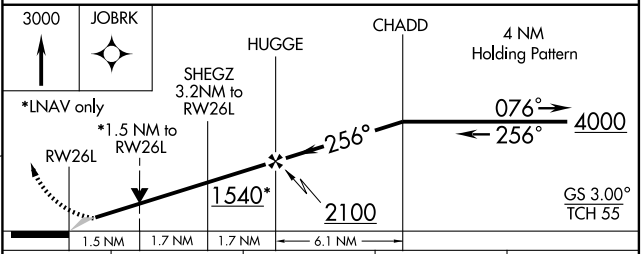
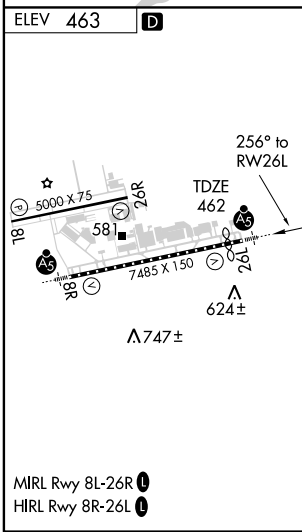
ATIS 134.8	ST. LOUIS APP CON 126.5 254.3	SPIRIT TOWER* 124.75 (CTAF) 0 257.2	GND CON 121.7	CLNC DEL 133.1	ST. LOUIS CLNC DEL 121.7 (when tower closed)
----------------------	---	---	-------------------------	--------------------------	---

Procedure NA for arrivals at FASHE via V9 northbound.
Procedure NA for arrivals at EMKAA via V88 southwest bound.



NC-3, 22 OCT 2009 to 19 NOV 2009

NC-3, 22 OCT 2009 to 19 NOV 2009



CATEGORY	A	B	C	D
LPV DA		662-½	200 (200-½)	
LNAV/ VNAV DA		969-1¼	507 (600-1¼)	
LNAV MDA	980-½	518 (600-½)	980-1 518 (600-1)	980-1¼ 518 (600-1¼)
CIRCLING	1100-1	637 (700-1)	1120-1¾ 657 (700-1¾)	1140-2¼ 677 (700-2¼)