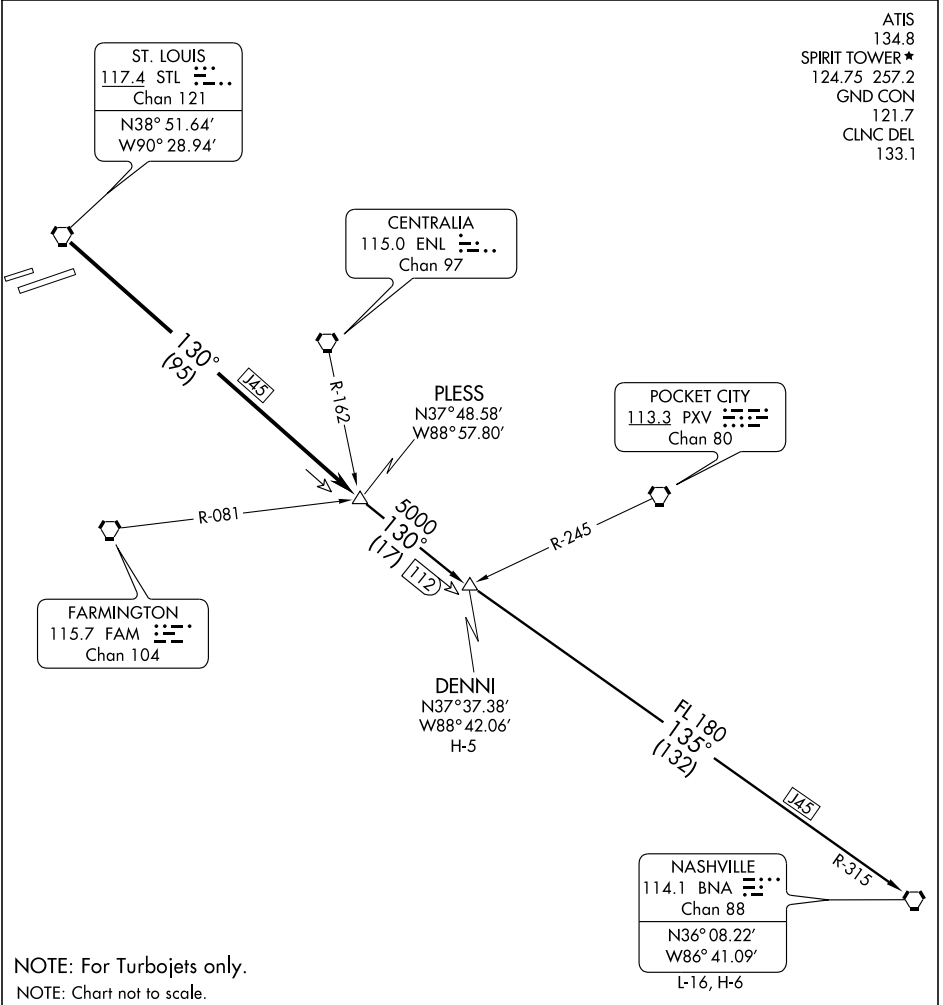


# PLESS ONE DEPARTURE

ATIS  
134.8  
SPIRIT TOWER\*  
124.75 257.2  
GND CON  
121.7  
CLNC DEL  
133.1



NC-3, 22 OCT 2009 to 19 NOV 2009

NC-3, 22 OCT 2009 to 19 NOV 2009

NOTE: For Turbojets only.  
NOTE: Chart not to scale.

## DEPARTURE ROUTE DESCRIPTION

Fly assigned heading for vector to appropriate route. From over STL VORTAC via STL R-130 to PLESS INT, then via (transition) or (assigned route). Climb and maintain 2500 feet or assigned altitude. Expect clearance to filed altitude 10 minutes after departure.

DENNI TRANSITION (PLESS1.DENNI): From over PLESS INT, via STL R-130 to DENNI INT.

NASHVILLE TRANSITION (PLESS1.BNA): From over PLESS INT, via STL R-130 and BNA R-315 to BNA VORTAC.