

ST. LOUIS, MISSOURI

AL-5400 (FAA)

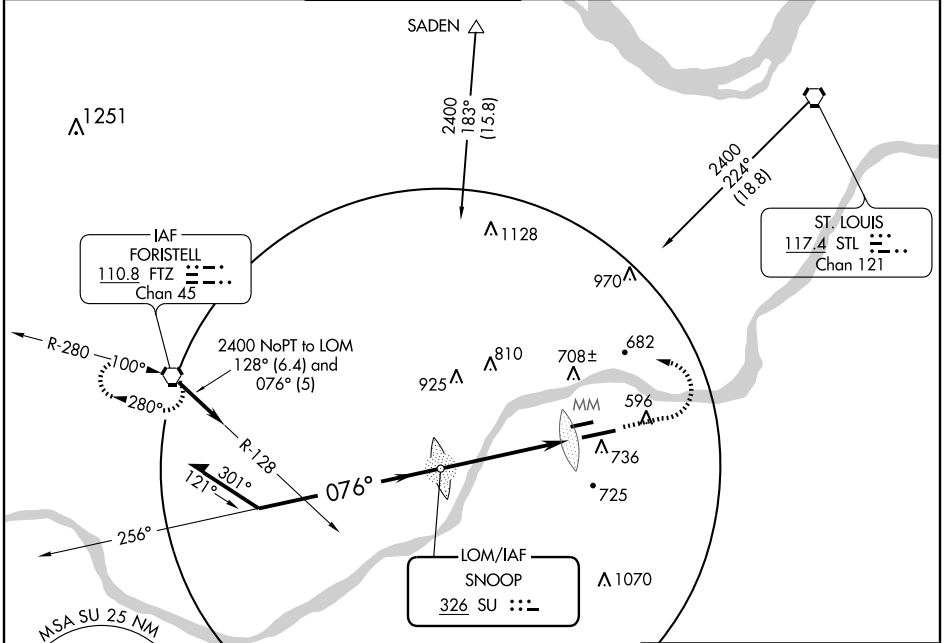
NDB RWY 8R

ST. LOUIS/ SPIRIT OF ST. LOUIS (SUS)

LOM SU 326	APP CRS 076°	Rwy Idg TDZE Apt Elev	7245 462 463
----------------------	------------------------	-----------------------------	---

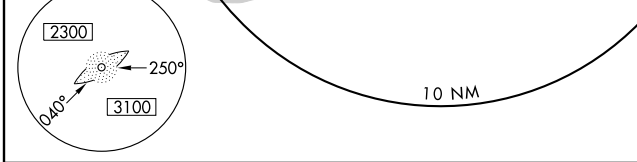
	MALSR		MISSED APPROACH: Climb to 1500 then climbing left turn to 2400 direct FTZ VORTAC and hold.
	AS		

ATIS 134.8	ST. LOUIS APP CON 126.5 254.3	SPIRIT TOWER★ 124.75 (CTAF) 0 257.2	GND CON 121.7	CLNC DEL 133.1	ST. LOUIS CLNC DEL 121.7 (when tower closed)
----------------------	---	---	-------------------------	--------------------------	---

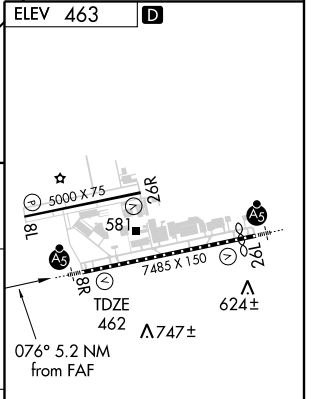
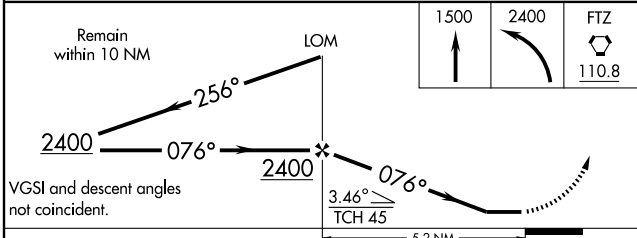


NC-3, 22 OCT 2009 to 19 NOV 2009

NC-3, 22 OCT 2009 to 19 NOV 2009



ELEV 463	D
----------	----------



CATEGORY	A	B	C	D
S-8R	1200/40 738 (800-¾)		1200-1½ 738 (800-1½)	1200-2 738 (800-2)
CIRCLING	1200-1 737 (800-1)		1200-2 737 (800-2)	1200-2¼ 737 (800-2¼)

MIRL Rwy 8L-26R	0
MIRL Rwy 8R-26L	0
FAF to MAP 5.2 NM	
Knots	60 90 120 150 180
Min:Sec	5:12 3:28 2:36 2:05 1:44

ST. LOUIS, MISSOURI
Amdt 11C 09127

38°40'N-90°39'W

ST. LOUIS/ SPIRIT OF ST. LOUIS (SUS)
NDB RWY 8R