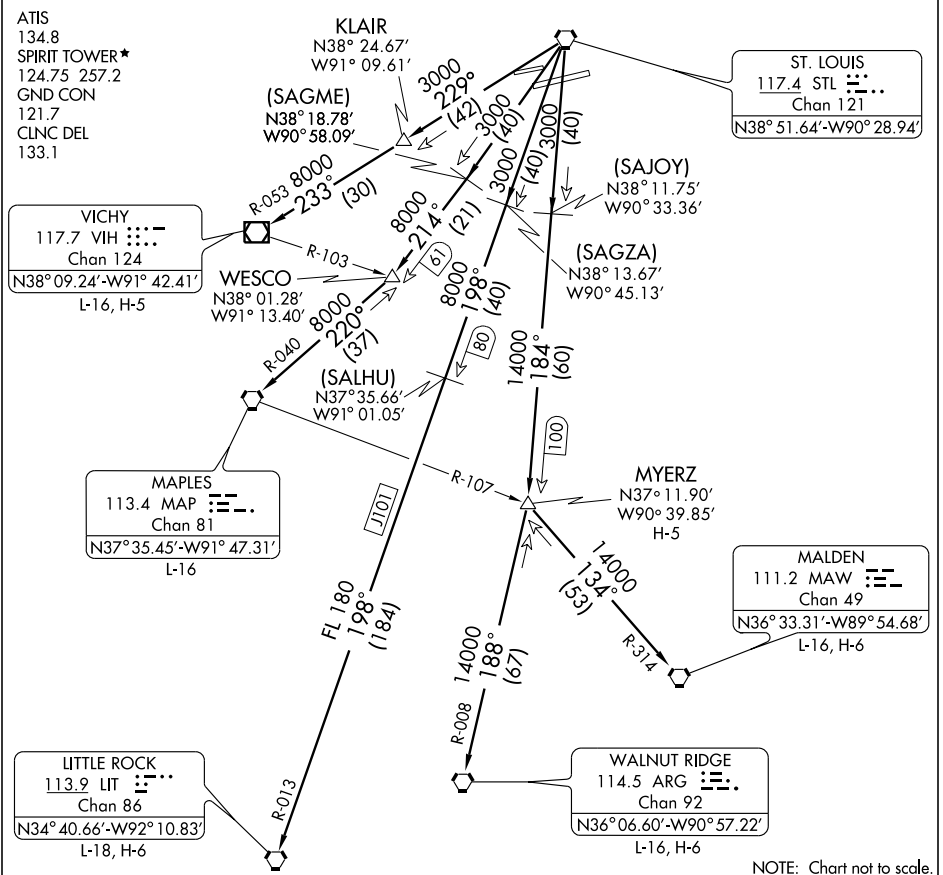


LINDBERGH TWO DEPARTURE



NC-3, 22 OCT 2009 to 19 NOV 2009

NC-3, 22 OCT 2009 to 19 NOV 2009

DEPARTURE ROUTE DESCRIPTION

Fly assigned heading for vector to appropriate route. Departures climb and maintain 2500 feet or assigned altitude. Expect clearance to filed altitude 10 minutes after departure.

- LITTLE ROCK TRANSITION (LINDY2.LIT):** From over STL VORTAC via STL R-198 and LIT R-013 to LIT VORTAC.
- MALDEN TRANSITION (LINDY2.MAW):** From over STL VORTAC via STL R-184 to MYERZ INT, then via MAW R-314 to MAW VORTAC.
- MAPLES TRANSITION (LINDY2.MAP):** From over STL VORTAC via STL R-214 to WESCO INT, then via MAP R-040 to MAP VORTAC.
- MYERZ TRANSITION (LINDY2.MYERZ):** From over STL VORTAC via STL R-184 to MYERZ INT.
- VICHY TRANSITION (LINDY2.VIH):** From over STL VORTAC via STL R-229 to KLAIR INT, then via VIH R-053 to VIH VOR/DME.
- WALNUT RIDGE TRANSITION (LINDY2.ARG):** From over STL VORTAC via STL R-184 to MYERZ INT, then via ARG R-008 to ARG VORTAC.